

Datasheet for ABIN928546
anti-MBNL2 antibody (Middle Region)



[Go to Product page](#)

1 Image

Overview

Quantity:	100 µL
Target:	MBNL2
Binding Specificity:	Middle Region
Reactivity:	Human, Mouse, Rat, Cow, Dog, Zebrafish (Danio rerio), Chicken
Host:	Rabbit
Clonality:	Polyclonal
Conjugate:	This MBNL2 antibody is un-conjugated
Application:	Western Blotting (WB)

Product Details

Immunogen:	MBNL2 antibody was raised in rabbit using the middle region of MBNL2 as the immunogen
Cross-Reactivity:	Mouse (Murine), Rat (Rattus), Dog (Canine), Chicken, Cow (Bovine), Zebrafish (Brachydanio rerio)
Purification:	Purified

Target Details

Target:	MBNL2
Alternative Name:	MBNL2 (MBNL2 Products)
Background:	MBNL2 is a C3H-type zinc finger protein, which is similar to the Drosophila melanogaster muscleblind B protein. MBNL2 is a RNA-binding protein that binds to 5'ACACCC-3' core sequence. It binds to CUG triplet repeat expansion in myotonic dystrophy muscle cells by

Target Details

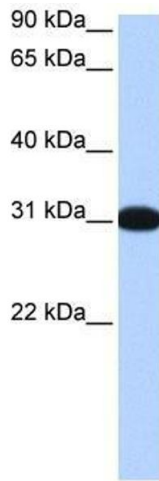
sequestering the target RNAs. MBNL2 seems to regulate expression and localization of ITGA3 by transporting it from the nucleus to cytoplasm. It may play a role in myotonic dystrophy pathophysiology (DM). Synonyms: Polyclonal MBNL2 antibody, Anti-MBNL2 antibody, muscleblind-like 2, Drosophila antibody, DKFZp781H1296 antibody, MBLL antibody, MBLL39 antibody, MGC120625 antibody, MGC120626 antibody, MGC120628 antibody, PRO2032 antibody.

Application Details

Application Notes:	WB: 0.2-1 µg/mL Optimal conditions should be determined by the investigator.
Comment:	MBNL2 Blocking Peptide, catalog no. 33R-2607, is also available for use as a blocking control in assays to test for specificity of this MBNL2 antibody
Restrictions:	For Research Use only

Handling

Format:	Lyophilized
Concentration:	Lot specific
Buffer:	Lyophilized powder. Add 50 µL of distilled water. Final antibody concentration is 1 mg/mL in PBS buffer.
Handling Advice:	Avoid repeated freeze/thaw cycles.
Storage:	4 °C/-20 °C
Storage Comment:	Store at 4 °C, following reconstitution, aliquot and store at -20 °C.



Western Blotting

Image 1. MBNL2 antibody used at 0.2-1 ug/ml to detect target protein.