

Datasheet for ABIN928554
anti-FHL5 antibody (Middle Region)



[Go to Product page](#)

1 Image

Overview

Quantity:	100 µL
Target:	FHL5
Binding Specificity:	Middle Region
Reactivity:	Human, Mouse, Rat, Cow, Dog
Host:	Rabbit
Clonality:	Polyclonal
Conjugate:	This FHL5 antibody is un-conjugated
Application:	Western Blotting (WB)

Product Details

Immunogen:	FHL5 antibody was raised in rabbit using the middle region of FHL5 as the immunogen
Cross-Reactivity:	Mouse (Murine), Rat (Rattus), Cow (Bovine), Dog (Canine)
Purification:	Purified

Target Details

Target:	FHL5
Alternative Name:	FHL5 (FHL5 Products)
Background:	FHL5 is coordinately expressed with activator of cAMP-responsive element modulator (CREM). It is associated with CREM and confers a powerful transcriptional activation function. CREM acts as a transcription factor essential for the differentiation of spermatids into mature spermatozoa. Synonyms: Polyclonal FHL5 antibody, Anti-FHL5 antibody, four and a half LIM

Target Details

domains 5 antibody, ACT antibody, FLJ33049 antibody, KIAA0776 antibody, RP3-393D12.2 antibody, dJ393D12.2 antibody.

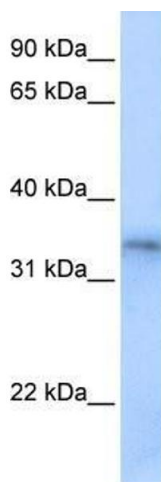
Application Details

Application Notes:	WB: 0.2-1 µg/mL Optimal conditions should be determined by the investigator.
Comment:	FHL5 Blocking Peptide, catalog no. 33R-9124, is also available for use as a blocking control in assays to test for specificity of this FHL5 antibody
Restrictions:	For Research Use only

Handling

Format:	Lyophilized
Concentration:	Lot specific
Buffer:	Lyophilized powder. Add 50 µL of distilled water. Final antibody concentration is 1 mg/mL in PBS buffer.
Handling Advice:	Avoid repeated freeze/thaw cycles.
Storage:	4 °C/-20 °C
Storage Comment:	Store at 4 °C, following reconstitution, aliquot and store at -20 °C.

Images



Western Blotting

Image 1. FHL5 antibody used at 0.2-1 ug/ml to detect target protein.