

Datasheet for ABIN928562
anti-INTS4 antibody (Middle Region)



[Go to Product page](#)

1 Image

Overview

Quantity:	100 µL
Target:	INTS4
Binding Specificity:	Middle Region
Reactivity:	Human, Mouse, Rat, Cow, Dog, Chicken, Xenopus laevis
Host:	Rabbit
Clonality:	Polyclonal
Conjugate:	This INTS4 antibody is un-conjugated
Application:	Western Blotting (WB)

Product Details

Immunogen:	INTS4 antibody was raised in rabbit using the middle region of INTS4 as the immunogen
Cross-Reactivity:	Mouse (Murine), Rat (Rattus), Cow (Bovine), Dog (Canine), Chicken, Frog
Purification:	Purified

Target Details

Target:	INTS4
Alternative Name:	INTS4 (INTS4 Products)
Background:	INTS4 is a subunit of the Integrator complex, which associates with the C-terminal domain of RNA polymerase II large subunit (POLR2A) and mediates 3-prime end processing of small nuclear RNAs U1 (RNU1) and U2 (RNU2). INTS4 is a subunit of the Integrator complex, which associates with the C-terminal domain of RNA polymerase II large subunit and mediates 3-

Target Details

prime end processing of small nuclear RNAs U1 and U2. Synonyms: Polyclonal INTS4 antibody, Anti-INTS4 antibody, integrator complex subunit 4 antibody, INT4 antibody, MGC16733 antibody, MST093 antibody.

Pathways: [SARS-CoV-2 Protein Interactome](#)

Application Details

Application Notes: WB: 0.2-1 µg/mL
Optimal conditions should be determined by the investigator.

Comment: INTS4 Blocking Peptide, catalog no. 33R-6957, is also available for use as a blocking control in assays to test for specificity of this INTS4 antibody

Restrictions: For Research Use only

Handling

Format: Lyophilized

Concentration: Lot specific

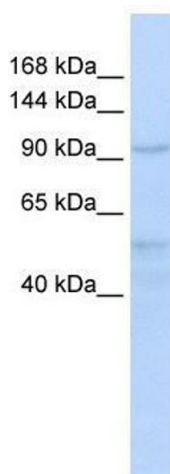
Buffer: Lyophilized powder. Add 50 µL of distilled water. Final antibody concentration is 1 mg/mL in PBS buffer.

Handling Advice: Avoid repeated freeze/thaw cycles.

Storage: 4 °C/-20 °C

Storage Comment: Store at 4 °C, following reconstitution, aliquot and store at -20 °C.

Images



Western Blotting

Image 1. Western Blot showing INTS4 antibody used at a concentration of 1-2 ug/ml to detect its target protein.