

Datasheet for ABIN928566  
**anti-ZNF681 antibody (C-Term)**



[Go to Product page](#)

1 Image

## Overview

Quantity:	100 µL
Target:	ZNF681
Binding Specificity:	C-Term
Reactivity:	Human
Host:	Rabbit
Clonality:	Polyclonal
Conjugate:	This ZNF681 antibody is un-conjugated
Application:	Western Blotting (WB)

## Product Details

Immunogen:	ZNF681 antibody was raised in rabbit using the C terminal of ZNF681 as the immunogen
Purification:	Purified

## Target Details

Target:	ZNF681
Alternative Name:	ZNF681 ( <a href="#">ZNF681 Products</a> )
Background:	ZNF681 belongs to the krueppel C2H2-type zinc-finger protein family. It Contains 16 C2H2-type zinc fingers. ZNF681 may be involved in transcriptional regulation. Synonyms: Polyclonal ZNF681 antibody, Anti-ZNF681 antibody, zinc finger protein 681 antibody, FLJ31526 antibody.

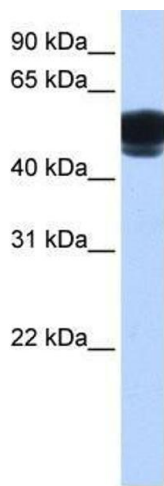
## Application Details

Application Notes:	WB: 0.2-1 µg/mL Optimal conditions should be determined by the investigator.
Comment:	ZNF681 Blocking Peptide, catalog no. 33R-3354, is also available for use as a blocking control in assays to test for specificity of this ZNF681 antibody
Restrictions:	For Research Use only

## Handling

Format:	Lyophilized
Concentration:	Lot specific
Buffer:	Lyophilized powder. Add 50 µL of distilled water. Final antibody concentration is 1 mg/mL in PBS buffer.
Handling Advice:	Avoid repeated freeze/thaw cycles.
Storage:	4 °C/-20 °C
Storage Comment:	Store at 4 °C, following reconstitution, aliquot and store at -20 °C.

## Images



### Western Blotting

**Image 1.** ZNF681 antibody used at 0.2-1 ug/ml to detect target protein.