

Datasheet for ABIN928571
anti-SSX8 antibody (C-Term)



[Go to Product page](#)

1 Image

Overview

Quantity:	100 µL
Target:	SSX8
Binding Specificity:	C-Term
Reactivity:	Human
Host:	Rabbit
Clonality:	Polyclonal
Conjugate:	This SSX8 antibody is un-conjugated
Application:	Western Blotting (WB)

Product Details

Immunogen:	SSX8 antibody was raised in rabbit using the C terminal of SSX8 as the immunogen
Purification:	Purified

Target Details

Target:	SSX8
Alternative Name:	SSX8 (SSX8 Products)
Background:	SSX8 belongs to the family of highly homologous synovial sarcoma X (SSX) breakpoint proteins. These proteins may function as transcriptional repressors. They are also capable of eliciting spontaneously humoral and cellular immune responses in cancer patients, and are potentially useful targets in cancer vaccine-based immunotherapy. SSX1, SSX2 and SSX4 genes have been involved in the t(X,18) translocation characteristically found in all synovial

Target Details

sarcomas. Synonyms: Polyclonal SSX8 antibody, Anti-SSX8 antibody, synovial sarcoma, X breakpoint 8 antibody.

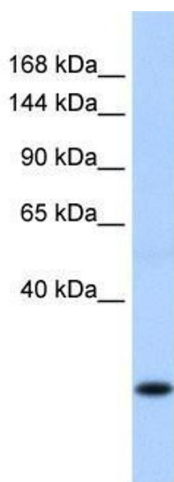
Application Details

Application Notes:	WB: 0.2-1 µg/mL Optimal conditions should be determined by the investigator.
Comment:	SSX8 Blocking Peptide, catalog no. 33R-6543, is also available for use as a blocking control in assays to test for specificity of this SSX8 antibody
Restrictions:	For Research Use only

Handling

Format:	Lyophilized
Concentration:	Lot specific
Buffer:	Lyophilized powder. Add 50 µL of distilled water. Final antibody concentration is 1 mg/mL in PBS buffer.
Handling Advice:	Avoid repeated freeze/thaw cycles.
Storage:	4 °C/-20 °C
Storage Comment:	Store at 4 °C, following reconstitution, aliquot and store at -20 °C.

Images



Western Blotting

Image 1. SSX8 antibody used at 0.2-1 ug/ml to detect target protein.