

Datasheet for ABIN928587
anti-AP3S1 antibody (C-Term)



[Go to Product page](#)

1 Image

Overview

Quantity:	100 µL
Target:	AP3S1
Binding Specificity:	C-Term
Reactivity:	Human
Host:	Rabbit
Clonality:	Polyclonal
Conjugate:	This AP3S1 antibody is un-conjugated
Application:	Western Blotting (WB)

Product Details

Immunogen:	AP3 S1 antibody was raised in rabbit using the C terminal of AP3 1 as the immunogen
Purification:	Purified

Target Details

Target:	AP3S1
Alternative Name:	AP3S1 (AP3S1 Products)
Background:	AP3S1 is part of the AP-3 complex, an adapter-related complex which is not clathrin-associated. The complex is associated with the Golgi region as well as more peripheral structures. It facilitates the budding of vesicles from the Golgi membrane and may be directly involved in trafficking to lysosomes. Synonyms: Polyclonal AP3S1 antibody, Anti-AP3S1 antibody, adaptor-related protein complex 3, sigma 1 subunit antibody, CLAPS3 antibody,

Target Details

Sigma3A antibody.

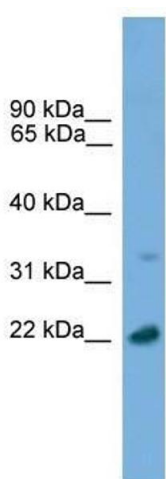
Application Details

Application Notes:	WB: 0.2-1 µg/mL Optimal conditions should be determined by the investigator.
Comment:	AP3S1 Blocking Peptide, catalog no. 33R-3908, is also available for use as a blocking control in assays to test for specificity of this AP3S1 antibody
Restrictions:	For Research Use only

Handling

Format:	Lyophilized
Concentration:	Lot specific
Buffer:	Lyophilized powder. Add 50 µL of distilled water. Final antibody concentration is 1 mg/mL in PBS buffer.
Handling Advice:	Avoid repeated freeze/thaw cycles.
Storage:	4 °C/-20 °C
Storage Comment:	Store at 4 °C, following reconstitution, aliquot and store at -20 °C.

Images



Western Blotting

Image 1. AP3S1 antibody used at 0.2-1 ug/ml to detect target protein.