

Datasheet for ABIN928588 **anti-CLNS1A antibody (C-Term)**



[Go to Product page](#)

1 Image

Overview

Quantity:	100 µL
Target:	CLNS1A
Binding Specificity:	C-Term
Reactivity:	Human, Mouse
Host:	Rabbit
Clonality:	Polyclonal
Conjugate:	This CLNS1A antibody is un-conjugated
Application:	Western Blotting (WB)

Product Details

Immunogen:	Clns1 a antibody was raised in rabbit using the C terminal of Clns1 as the immunogen
Cross-Reactivity:	Mouse (Murine)
Purification:	Purified

Target Details

Target:	CLNS1A
Alternative Name:	Clns1a (CLNS1A Products)
Background:	This gene encodes a protein that functions in multiple regulatory pathways. The encoded protein complexes with numerous cytosolic proteins and performs diverse functions including regulation of small nuclear ribonucleoprotein biosynthesis, platelet activation and cytoskeletal organization. The protein is also found associated with the plasma membrane where it

Target Details

functions as a chloride current regulator. Pseudogenes of this gene are found on chromosomes 1, 4 and 6. Synonyms: Polyclonal Clns1a antibody, Anti-Clns1a antibody, chloride channel, nucleotide-sensitive, 1A antibody, 2610036D06Rik antibody, 2610100004Rik antibody, Clci antibody, Clcni antibody, ICLN antibody.

Pathways: [Ribonucleoprotein Complex Subunit Organization](#)

Application Details

Application Notes: WB: 0.2-1 µg/mL
Optimal conditions should be determined by the investigator.

Comment: Clns1a Blocking Peptide, catalog no. 33R-1337, is also available for use as a blocking control in assays to test for specificity of this Clns1a antibody

Restrictions: For Research Use only

Handling

Format: Lyophilized

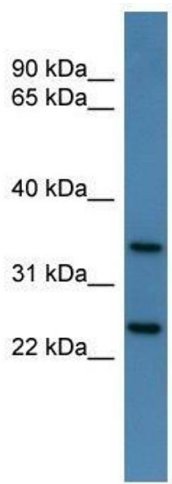
Concentration: Lot specific

Buffer: Lyophilized powder. Add 50 µL of distilled water. Final antibody concentration is 1 mg/mL in PBS buffer.

Handling Advice: Avoid repeated freeze/thaw cycles.

Storage: 4 °C/-20 °C

Storage Comment: Store at 4 °C, following reconstitution, aliquot and store at -20 °C.



Western Blotting

Image 1. Clns1a antibody used at 0.2-1 ug/ml to detect target protein.