

Datasheet for ABIN928591  
**anti-DNASE1L2 antibody (Middle Region)**



[Go to Product page](#)

1 Image

## Overview

Quantity:	100 µL
Target:	DNASE1L2
Binding Specificity:	Middle Region
Reactivity:	Rat, Human
Host:	Rabbit
Clonality:	Polyclonal
Conjugate:	This DNASE1L2 antibody is un-conjugated
Application:	Western Blotting (WB)

## Product Details

Immunogen:	LOC100364462 antibody was raised in rabbit using the middle region of LOC100364462 as the immunogen
Cross-Reactivity:	Rat (Rattus)
Purification:	Purified

## Target Details

Target:	DNASE1L2
Alternative Name:	LOC100364462 ( <a href="#">DNASE1L2 Products</a> )
Background:	The function of LOC100364462 remains unknown. Synonyms: Polyclonal LOC100364462 antibody, Anti-LOC100364462 antibody, rCG35247-like antibody, LOC100364462 antibody.

## Application Details

---

Application Notes:	WB: 0.2-1 µg/mL Optimal conditions should be determined by the investigator.
Comment:	LOC100364462 Blocking Peptide, catalog no. 33R-5058, is also available for use as a blocking control in assays to test for specificity of this LOC100364462 antibody
Restrictions:	For Research Use only

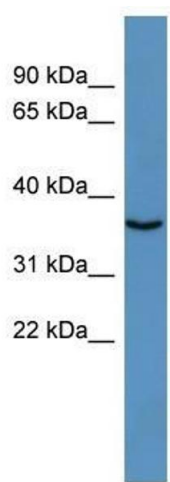
## Handling

---

Format:	Lyophilized
Concentration:	Lot specific
Buffer:	Lyophilized powder. Add 50 µL of distilled water. Final antibody concentration is 1 mg/mL in PBS buffer.
Handling Advice:	Avoid repeated freeze/thaw cycles.
Storage:	4 °C/-20 °C
Storage Comment:	Store at 4 °C, following reconstitution, aliquot and store at -20 °C.

## Images

---



### Western Blotting

**Image 1.** LOC100364462 antibody used at 0.2-1 ug/ml to detect target protein.