

Datasheet for ABIN928594  
**anti-Endothelin 2 antibody (N-Term)**



[Go to Product page](#)

1 Image

## Overview

Quantity:	100 µL
Target:	Endothelin 2 (EDN2)
Binding Specificity:	N-Term
Reactivity:	Human
Host:	Rabbit
Clonality:	Polyclonal
Conjugate:	This Endothelin 2 antibody is un-conjugated
Application:	Western Blotting (WB)

## Product Details

Immunogen:	EDN2 antibody was raised in rabbit using the n terminal of EDN2 as the immunogen
Purification:	Purified

## Target Details

Target:	Endothelin 2 (EDN2)
Alternative Name:	EDN2 ( <a href="#">EDN2 Products</a> )
Background:	This gene encodes a member of the endothelin protein family of secretory vasoconstrictive peptides. The preproprotein is processed to a short mature form which functions as a ligand for the endothelin receptors that initiate intracellular signaling events. This gene product is involved in a wide range of biological processes, such as hypertension and ovulation. Synonyms: Polyclonal EDN2 antibody, Anti-EDN2 antibody, endothelin 2 antibody, ET2 antibody.

## Target Details

---

Pathways: [Hormone Activity](#), [Negative Regulation of Hormone Secretion](#), [Regulation of Systemic Arterial Blood Pressure by Hormones](#)

## Application Details

---

Application Notes: WB: 0.2-1 µg/mL  
Optimal conditions should be determined by the investigator.

Comment: EDN2 Blocking Peptide, catalog no. 33R-6611, is also available for use as a blocking control in assays to test for specificity of this EDN2 antibody

Restrictions: For Research Use only

## Handling

---

Format: Lyophilized

Concentration: Lot specific

Buffer: Lyophilized powder. Add 50 µL of distilled water. Final antibody concentration is 1 mg/mL in PBS buffer.

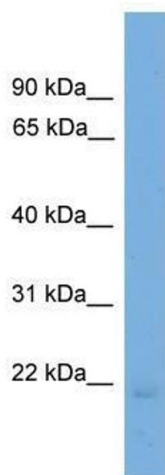
Handling Advice: Avoid repeated freeze/thaw cycles.

Storage: 4 °C/-20 °C

Storage Comment: Store at 4 °C, following reconstitution, aliquot and store at -20 °C.

## Images

---



### Western Blotting

**Image 1.** Western Blot showing EDN2 antibody used at a concentration of 1-2 µg/ml to detect its target protein.