

Datasheet for ABIN928600
anti-EDIL3 antibody (N-Term)



[Go to Product page](#)

1 Image

Overview

Quantity:	100 µL
Target:	EDIL3 (DEL1)
Binding Specificity:	N-Term
Reactivity:	Human
Host:	Rabbit
Clonality:	Polyclonal
Conjugate:	This EDIL3 antibody is un-conjugated
Application:	Western Blotting (WB)

Product Details

Immunogen:	EDIL3 antibody was raised in rabbit using the N terminal of EDIL3 as the immunogen
Purification:	Purified

Target Details

Target:	EDIL3 (DEL1)
Alternative Name:	EDIL3 (DEL1 Products)
Background:	The protein encoded by this gene is an integrin ligand. It plays an important role in mediating angiogenesis and may be important in vessel wall remodeling and development. It also influences endothelial cell behavior. Synonyms: Polyclonal EDIL3 antibody, Anti-EDIL3 antibody, EGF-like repeats and discoidin I-like domains 3 antibody, DEL1 antibody, MGC26287 antibody.

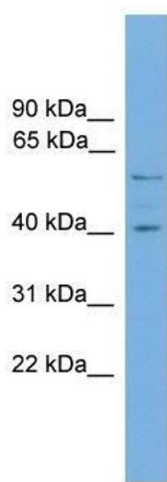
Application Details

Application Notes:	WB: 0.2-1 µg/mL Optimal conditions should be determined by the investigator.
Comment:	EDIL3 Blocking Peptide, catalog no. 33R-2651, is also available for use as a blocking control in assays to test for specificity of this EDIL3 antibody
Restrictions:	For Research Use only

Handling

Format:	Lyophilized
Concentration:	Lot specific
Buffer:	Lyophilized powder. Add 50 µL of distilled water. Final antibody concentration is 1 mg/mL in PBS buffer.
Handling Advice:	Avoid repeated freeze/thaw cycles.
Storage:	4 °C/-20 °C
Storage Comment:	Store at 4 °C, following reconstitution, aliquot and store at -20 °C.

Images



Western Blotting

Image 1. Western Blot showing EDIL3 antibody used at a concentration of 1-2 ug/ml to detect its target protein.