

Datasheet for ABIN928612 **anti-TOMM34 antibody (N-Term)**



[Go to Product page](#)

1 Image

Overview

Quantity:	100 µL
Target:	TOMM34
Binding Specificity:	N-Term
Reactivity:	Human
Host:	Rabbit
Clonality:	Polyclonal
Conjugate:	This TOMM34 antibody is un-conjugated
Application:	Western Blotting (WB)

Product Details

Immunogen:	TOMM34 antibody was raised in rabbit using the N terminal of TOMM34 as the immunogen
Purification:	Purified

Target Details

Target:	TOMM34
Alternative Name:	TOMM34 (TOMM34 Products)
Background:	The protein encoded by this gene is involved in the import of precursor proteins into mitochondria. The encoded protein has a chaperone-like activity, binding the mature portion of unfolded proteins and aiding their import into mitochondria. This protein, which is found in the cytoplasm and sometimes associated with the outer mitochondrial membrane, has a weak ATPase activity and contains 6 TPR repeats. Synonyms: Polyclonal TOMM34 antibody, Anti-

Target Details

TOMM34 antibody, translocase of outer mitochondrial membrane 34 antibody, HTOM34P antibody, TOM34 antibody, URCC3 antibody.

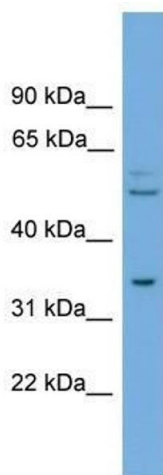
Application Details

Application Notes:	WB: 0.2-1 µg/mL Optimal conditions should be determined by the investigator.
Comment:	TOMM34 Blocking Peptide, catalog no. 33R-1368, is also available for use as a blocking control in assays to test for specificity of this TOMM34 antibody
Restrictions:	For Research Use only

Handling

Format:	Lyophilized
Concentration:	Lot specific
Buffer:	Lyophilized powder. Add 50 µL of distilled water. Final antibody concentration is 1 mg/mL in PBS buffer.
Handling Advice:	Avoid repeated freeze/thaw cycles.
Storage:	4 °C/-20 °C
Storage Comment:	Store at 4 °C, following reconstitution, aliquot and store at -20 °C.

Images



Western Blotting

Image 1. TOMM34 antibody used at 0.2-1 ug/ml to detect target protein.