

Datasheet for ABIN928616
anti-ADAP1 antibody (C-Term)



[Go to Product page](#)

1 Image

Overview

Quantity:	100 µL
Target:	ADAP1
Binding Specificity:	C-Term
Reactivity:	Human, Mouse
Host:	Rabbit
Clonality:	Polyclonal
Conjugate:	This ADAP1 antibody is un-conjugated
Application:	Western Blotting (WB)

Product Details

Immunogen:	Centa1 antibody was raised in rabbit using the C terminal of Centa1 as the immunogen
Cross-Reactivity:	Mouse (Murine)
Purification:	Purified

Target Details

Target:	ADAP1
Alternative Name:	Centa1 (ADAP1 Products)
Background:	Centa1 is a GTPase-activating protein for the ADP ribosylation factor family. Synonyms: Polyclonal Centa1 antibody, Anti-Centa1 antibody, ArfGAP with dual PH domains 1 antibody, 4930431P11Rik antibody, Centa1 antibody, GC1L antibody, p42IP4 antibody.

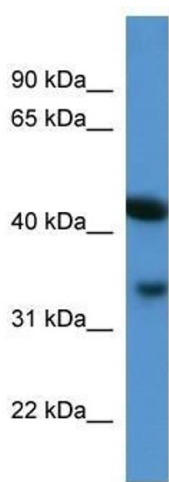
Application Details

Application Notes:	WB: 0.2-1 µg/mL Optimal conditions should be determined by the investigator.
Comment:	Centa1 Blocking Peptide, catalog no. 33R-1470, is also available for use as a blocking control in assays to test for specificity of this Centa1 antibody
Restrictions:	For Research Use only

Handling

Format:	Lyophilized
Concentration:	Lot specific
Buffer:	Lyophilized powder. Add 50 µL of distilled water. Final antibody concentration is 1 mg/mL in PBS buffer.
Handling Advice:	Avoid repeated freeze/thaw cycles.
Storage:	4 °C/-20 °C
Storage Comment:	Store at 4 °C, following reconstitution, aliquot and store at -20 °C.

Images



Western Blotting

Image 1. Centa1 antibody used at 0.2-1 ug/ml to detect target protein.