

Datasheet for ABIN928620
anti-CAPN11 antibody (N-Term)



[Go to Product page](#)

1 Image

Overview

Quantity:	100 µL
Target:	CAPN11
Binding Specificity:	N-Term
Reactivity:	Human
Host:	Rabbit
Clonality:	Polyclonal
Conjugate:	This CAPN11 antibody is un-conjugated
Application:	Western Blotting (WB)

Product Details

Immunogen:	CAPN11 antibody was raised in rabbit using the N terminal of CAPN11 as the immunogen
Purification:	Purified

Target Details

Target:	CAPN11
Alternative Name:	CAPN11 (CAPN11 Products)
Background:	Calpains constitute a family of intracellular calcium-dependent cysteine proteases. There are eight members in this superfamily. They consist of a variable 80 kDa subunit and an invariant 30 kDa subunit. This calpain protein appears to have protease activity and calcium-binding ability. A similar mouse protein may play a functional role in spermatogenesis and in the regulation of calcium-dependent signal transduction events during meiosis. Synonyms:

Target Details

Polyclonal CAPN11 antibody, Anti-CAPN11 antibody, calpain 11 antibody, calpain11 antibody.

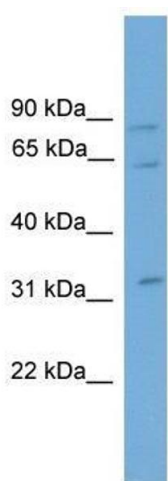
Application Details

Application Notes:	WB: 0.2-1 µg/mL Optimal conditions should be determined by the investigator.
Comment:	CAPN11 Blocking Peptide, catalog no. 33R-6811, is also available for use as a blocking control in assays to test for specificity of this CAPN11 antibody
Restrictions:	For Research Use only

Handling

Format:	Lyophilized
Concentration:	Lot specific
Buffer:	Lyophilized powder. Add 50 µL of distilled water. Final antibody concentration is 1 mg/mL in PBS buffer.
Handling Advice:	Avoid repeated freeze/thaw cycles.
Storage:	4 °C/-20 °C
Storage Comment:	Store at 4 °C, following reconstitution, aliquot and store at -20 °C.

Images



Western Blotting

Image 1. CAPN11 antibody used at 0.2-1 ug/ml to detect target protein.