

## Datasheet for ABIN928622 **anti-PRSS23 antibody (C-Term)**



[Go to Product page](#)

### 1 Image

#### Overview

Quantity:	100 µL
Target:	PRSS23
Binding Specificity:	C-Term
Reactivity:	Human
Host:	Rabbit
Clonality:	Polyclonal
Conjugate:	This PRSS23 antibody is un-conjugated
Application:	Western Blotting (WB)

#### Product Details

Immunogen:	PRSS23 antibody was raised in rabbit using the C terminal of PRSS23 as the immunogen
Purification:	Purified

#### Target Details

Target:	PRSS23
Alternative Name:	PRSS23 ( <a href="#">PRSS23 Products</a> )
Background:	This gene encodes a member of the trypsin family of serine proteases. Mouse studies found a decrease of mRNA levels after ovulation was induced. This gene seems to be highly conserved in vertebrates and may be an important ovarian protease. Synonyms: Polyclonal PRSS23 antibody, Anti-PRSS23 antibody, protease, serine, 23 antibody, MGC5107 antibody, SIG13 antibody, SPUVE antibody, ZSIG13 antibody.

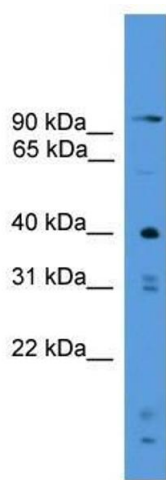
## Application Details

Application Notes:	WB: 0.2-1 µg/mL Optimal conditions should be determined by the investigator.
Comment:	PRSS23 Blocking Peptide, catalog no. 33R-9817, is also available for use as a blocking control in assays to test for specificity of this PRSS23 antibody
Restrictions:	For Research Use only

## Handling

Format:	Lyophilized
Concentration:	Lot specific
Buffer:	Lyophilized powder. Add 50 µL of distilled water. Final antibody concentration is 1 mg/mL in PBS buffer.
Handling Advice:	Avoid repeated freeze/thaw cycles.
Storage:	4 °C/-20 °C
Storage Comment:	Store at 4 °C, following reconstitution, aliquot and store at -20 °C.

## Images



### Western Blotting

**Image 1.** PRSS23 antibody used at 0.2-1 ug/ml to detect target protein.