

Datasheet for ABIN928625  
**anti-SEC23IP antibody (N-Term)**



[Go to Product page](#)

1 Image

## Overview

Quantity:	100 µL
Target:	SEC23IP
Binding Specificity:	N-Term
Reactivity:	Human
Host:	Rabbit
Clonality:	Polyclonal
Conjugate:	This SEC23IP antibody is un-conjugated
Application:	Western Blotting (WB)

## Product Details

Immunogen:	SEC23 IP antibody was raised in rabbit using the N terminal of SEC23 P as the immunogen
Purification:	Purified

## Target Details

Target:	SEC23IP
Alternative Name:	SEC23IP ( <a href="#">SEC23IP Products</a> )
Background:	COPII-coated vesicles are involved in protein transport from the endoplasmic reticulum to the Golgi apparatus. The protein encoded by this gene was identified by its interaction with a mouse protein similar to yeast Sec23p, an essential component of the COPII. This protein shares significant similarity with phospholipid-modifying proteins, especially phosphatidic acid preferring-phospholipase A1. Overexpression of this protein has been shown to cause

## Target Details

disorganization of the endoplasmic reticulum-Golgi intermediate compartment and Golgi apparatus, which suggests its role in the early secretory pathway. Synonyms: Polyclonal SEC23IP antibody, Anti-SEC23IP antibody, SEC23 interacting protein antibody, MSTP053 antibody, P125 antibody.

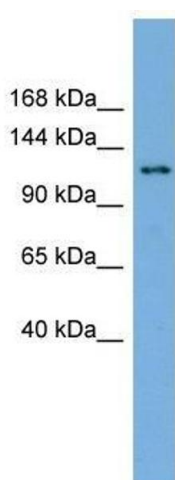
## Application Details

Application Notes:	WB: 0.2-1 µg/mL Optimal conditions should be determined by the investigator.
Comment:	SEC23IP Blocking Peptide, catalog no. 33R-9723, is also available for use as a blocking control in assays to test for specificity of this SEC23IP antibody
Restrictions:	For Research Use only

## Handling

Format:	Lyophilized
Concentration:	Lot specific
Buffer:	Lyophilized powder. Add 50 µL of distilled water. Final antibody concentration is 1 mg/mL in PBS buffer.
Handling Advice:	Avoid repeated freeze/thaw cycles.
Storage:	4 °C/-20 °C
Storage Comment:	Store at 4 °C, following reconstitution, aliquot and store at -20 °C.

## Images



### Western Blotting

**Image 1.** SEC23IP antibody used at 0.2-1 µg/ml to detect target protein.