

Datasheet for ABIN928638
anti-KLHDC3 antibody (N-Term)



[Go to Product page](#)

1 Image

Overview

Quantity:	100 µL
Target:	KLHDC3
Binding Specificity:	N-Term
Reactivity:	Human
Host:	Rabbit
Clonality:	Polyclonal
Conjugate:	This KLHDC3 antibody is un-conjugated
Application:	Western Blotting (WB)

Product Details

Immunogen:	KLHDC3 antibody was raised in rabbit using the N terminal of KLHDC3 as the immunogen
Purification:	Purified

Target Details

Target:	KLHDC3
Alternative Name:	KLHDC3 (KLHDC3 Products)
Background:	The protein encoded by this gene contains six repeated kelch motifs that are structurally similar to recombination activating gene 2 (RAG2), a protein involved in the activation of the V(D)J recombination. In mouse, this gene is found to express specifically in testis. Its expression in pachytene spermatocytes is localized to cytoplasm and meiotic chromatin, which suggests that this gene may be involved in meiotic recombination. Synonyms: Polyclonal KLHDC3

Target Details

antibody, Anti-KLHDC3 antibody, kelch domain containing 3 antibody, PEAS antibody, RP1-20C7.3 antibody, dJ20C7.3 antibody, hPEAS antibody.

Pathways: [Chromatin Binding](#), [ER-Nucleus Signaling](#)

Application Details

Application Notes: WB: 0.2-1 µg/mL
Optimal conditions should be determined by the investigator.

Comment: KLHDC3 Blocking Peptide, catalog no. 33R-6214, is also available for use as a blocking control in assays to test for specificity of this KLHDC3 antibody

Restrictions: For Research Use only

Handling

Format: Lyophilized

Concentration: Lot specific

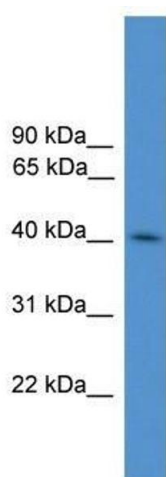
Buffer: Lyophilized powder. Add 50 µL of distilled water. Final antibody concentration is 1 mg/mL in PBS buffer.

Handling Advice: Avoid repeated freeze/thaw cycles.

Storage: 4 °C/-20 °C

Storage Comment: Store at 4 °C, following reconstitution, aliquot and store at -20 °C.

Images



Western Blotting

Image 1. KLHDC3 antibody used at 0.2-1 ug/ml to detect target protein.