

Datasheet for ABIN928646
anti-CCBE1 antibody (C-Term)



[Go to Product page](#)

1 Image

Overview

Quantity:	100 µL
Target:	CCBE1
Binding Specificity:	C-Term
Reactivity:	Human, Mouse
Host:	Rabbit
Clonality:	Polyclonal
Conjugate:	This CCBE1 antibody is un-conjugated
Application:	Western Blotting (WB)

Product Details

Immunogen:	Ccbe1 antibody was raised in rabbit using the C terminal of Ccbe1 as the immunogen
Cross-Reactivity:	Mouse (Murine)
Purification:	Purified

Target Details

Target:	CCBE1
Alternative Name:	Ccbe1 (CCBE1 Products)
Background:	Ccbe1 is required for lymphangioblast budding and angiogenic sprouting from venous endothelium during embryogenesis. Synonyms: Polyclonal Ccbe1 antibody, Anti-Ccbe1 antibody, collagen and calcium binding EGF domains 1 antibody, 4933426F18Rik antibody, 9430093N24Rik antibody, KIAA1983 antibody, MGC118667 antibody, mKIAA1983 antibody.

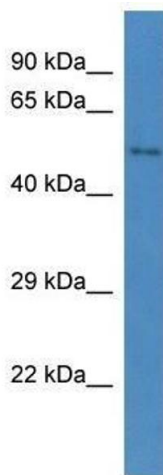
Application Details

Application Notes:	Optimal conditions should be determined by the investigator.
Comment:	Ccbe1 Blocking Peptide, catalog no. 33R-7915, is also available for use as a blocking control in assays to test for specificity of this Ccbe1 antibody
Restrictions:	For Research Use only

Handling

Format:	Lyophilized
Concentration:	Lot specific
Buffer:	Lyophilized powder. Add 50 μ L of distilled water. Final antibody concentration is 1 mg/mL in PBS buffer.
Handling Advice:	Avoid repeated freeze/thaw cycles.
Storage:	4 °C/-20 °C
Storage Comment:	Store at 4 °C, following reconstitution, aliquot and store at -20 °C.

Images



Western Blotting

Image 1. Western Blot showing Ccbe1 antibody used at a concentration of 1.0 μ g/ml against Mouse Kidney Lysate