

Datasheet for ABIN928649

**anti-ALS2CR12 antibody (N-Term)**[Go to Product page](#)**1** Image

## Overview

Quantity:	100 µL
Target:	ALS2CR12
Binding Specificity:	N-Term
Reactivity:	Human
Host:	Rabbit
Clonality:	Polyclonal
Conjugate:	This ALS2CR12 antibody is un-conjugated
Application:	Western Blotting (WB)

## Product Details

Immunogen:	ALS2 CR12 antibody was raised in rabbit using the N terminal of ALS2 R12 as the immunogen
Purification:	Purified

## Target Details

Target:	ALS2CR12
Alternative Name:	ALS2CR12 ( <a href="#">ALS2CR12 Products</a> )
Background:	The exact function of ALS2CR12 remains unknown. Synonyms: Polyclonal ALS2CR12 antibody, Anti-ALS2CR12 antibody, amyotrophic lateral sclerosis 2, juvenile chromosome region, candidate 12 antibody.

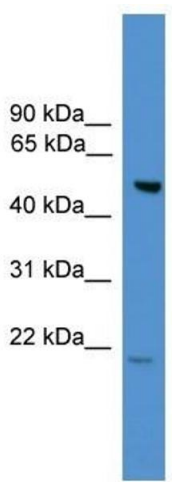
Application Details

Application Notes:	WB: 0.2-1 µg/mL Optimal conditions should be determined by the investigator.
Comment:	ALS2CR12 Blocking Peptide, catalog no. 33R-8263, is also available for use as a blocking control in assays to test for specificity of this ALS2CR12 antibody
Restrictions:	For Research Use only

Handling

Format:	Lyophilized
Concentration:	Lot specific
Buffer:	Lyophilized powder. Add 50 µL of distilled water. Final antibody concentration is 1 mg/mL in PBS buffer.
Handling Advice:	Avoid repeated freeze/thaw cycles.
Storage:	4 °C/-20 °C
Storage Comment:	Store at 4 °C, following reconstitution, aliquot and store at -20 °C.

Images



**Western Blotting**

**Image 1.** ALS2CR12 antibody used at 0.2-1 ug/ml to detect target protein.