

## Datasheet for ABIN928660 **anti-CISH antibody (N-Term)**



[Go to Product page](#)

### 1 Image

#### Overview

Quantity:	100 µL
Target:	CISH
Binding Specificity:	N-Term
Reactivity:	Human, Mouse
Host:	Rabbit
Clonality:	Polyclonal
Conjugate:	This CISH antibody is un-conjugated
Application:	Western Blotting (WB)

#### Product Details

Immunogen:	Cish antibody was raised in rabbit using the N terminal of Cish as the immunogen
Cross-Reactivity:	Mouse (Murine)
Purification:	Purified

#### Target Details

Target:	CISH
Alternative Name:	Cish ( <a href="#">CISH Products</a> )
Background:	SOCS family proteins form part of a classical negative feedback system that regulates cytokine signal transduction. CIS is involved in the negative regulation of cytokines that signal through the JAK-STAT5 pathway such as erythropoietin, prolactin and interleukin 3 (IL3) receptor. Inhibits STAT5 trans-activation by suppressing its tyrosine phosphorylation. May be a

## Target Details

---

substrate-recognition component of a SCF-like ECS (Elongin BC-CUL2/5-SOCS-box protein) E3 ubiquitin-protein ligase complex which mediates the ubiquitination and subsequent proteasomal degradation of target proteins. Synonyms: Polyclonal Cish antibody, Anti-Cish antibody, cytokine inducible SH2-containing protein antibody, AI385595 antibody, CIS1 antibody, Cis antibody, F17 antibody, F23 antibody.

Pathways: [JAK-STAT Signaling](#), [Response to Growth Hormone Stimulus](#)

## Application Details

---

Application Notes: WB: 0.2-1 µg/mL  
Optimal conditions should be determined by the investigator.

Comment: Cish Blocking Peptide, catalog no. 33R-7890, is also available for use as a blocking control in assays to test for specificity of this Cish antibody

Restrictions: For Research Use only

## Handling

---

Format: Lyophilized

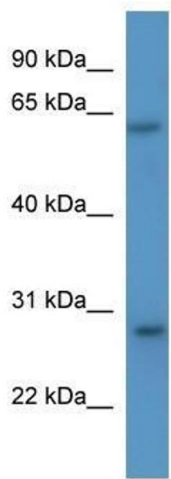
Concentration: Lot specific

Buffer: Lyophilized powder. Add 50 µL of distilled water. Final antibody concentration is 1 mg/mL in PBS buffer.

Handling Advice: Avoid repeated freeze/thaw cycles.

Storage: 4 °C/-20 °C

Storage Comment: Store at 4 °C, following reconstitution, aliquot and store at -20 °C.



### Western Blotting

**Image 1.** Cish antibody used at 0.2-1 ug/ml to detect target protein.