

Datasheet for ABIN928673
anti-KHDRBS2 antibody (N-Term)



[Go to Product page](#)

1 Image

Overview

Quantity:	100 µL
Target:	KHDRBS2
Binding Specificity:	N-Term
Reactivity:	Human
Host:	Rabbit
Clonality:	Polyclonal
Conjugate:	This KHDRBS2 antibody is un-conjugated
Application:	Western Blotting (WB)

Product Details

Immunogen:	KHDRBS2 antibody was raised in rabbit using the N terminal of KHDRBS2 as the immunogen
Purification:	Purified

Target Details

Target:	KHDRBS2
Alternative Name:	KHDRBS2 (KHDRBS2 Products)
Background:	KHDRBS2 is a RNA-binding protein that plays a role in the regulation of alternative splicing and influences mRNA splice site selection and exon inclusion. Its phosphorylation by FYN inhibits its ability to regulate splice site selection. KHDRBS2 induces an increased concentration-dependent incorporation of exon in CD44 pre-mRNA by direct binding to purine-rich exonic enhancer. KHDRBS2 may function as an adapter protein for Src kinases during mitosis.

Target Details

KHDRBS2 binds both poly(A) and poly(U) homopolymers. Phosphorylation by PTK6 inhibits its RNA-binding ability. Synonyms: Polyclonal KHDRBS2 antibody, Anti-KHDRBS2 antibody, KH domain containing, RNA binding, signal transduction associated 2 antibody, FLJ38664 antibody, MGC26664 antibody, SLM-1 antibody, SLM1 antibody, bA535F17.1 antibody.

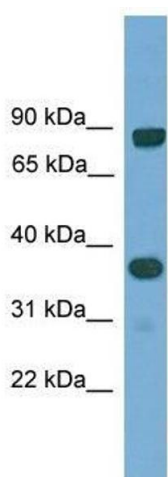
Application Details

Application Notes:	WB: 0.2-1 µg/mL Optimal conditions should be determined by the investigator.
Comment:	KHDRBS2 Blocking Peptide, catalog no. 33R-2361, is also available for use as a blocking control in assays to test for specificity of this KHDRBS2 antibody
Restrictions:	For Research Use only

Handling

Format:	Lyophilized
Concentration:	Lot specific
Buffer:	Lyophilized powder. Add 50 µL of distilled water. Final antibody concentration is 1 mg/mL in PBS buffer.
Handling Advice:	Avoid repeated freeze/thaw cycles.
Storage:	4 °C/-20 °C
Storage Comment:	Store at 4 °C, following reconstitution, aliquot and store at -20 °C.

Images



Western Blotting

Image 1. KHDRBS2 antibody used at 0.2-1 ug/ml to detect target protein.