

Datasheet for ABIN928675 **anti-FBXL16 antibody (N-Term)**



[Go to Product page](#)

1 Image

Overview

Quantity:	100 µL
Target:	FBXL16
Binding Specificity:	N-Term
Reactivity:	Human
Host:	Rabbit
Clonality:	Polyclonal
Conjugate:	This FBXL16 antibody is un-conjugated
Application:	Western Blotting (WB)

Product Details

Immunogen:	FBXL16 antibody was raised in rabbit using the N terminal of FBXL16 as the immunogen
Purification:	Purified

Target Details

Target:	FBXL16
Alternative Name:	FBXL16 (FBXL16 Products)
Background:	Members of the F-box protein family, such as FBXL16, are characterized by an approximately 40-amino acid F-box motif. SCF complexes, formed by SKP1, cullin, and F-box proteins, act as protein-ubiquitin ligases. F-box proteins interact with SKP1 through the F box, and they interact with ubiquitination targets through other protein interaction domains. Synonyms: Polyclonal FBXL16 antibody, Anti-FBXL16 antibody, F-box and leucine-rich repeat protein 16 antibody,

Target Details

C16orf22 antibody, FLJ33735 antibody, Fbl16 antibody, MGC33974 antibody, c380A1.1 antibody.

Application Details

Application Notes: WB: 0.2-1 µg/mL
Optimal conditions should be determined by the investigator.

Restrictions: For Research Use only

Handling

Format: Lyophilized

Concentration: Lot specific

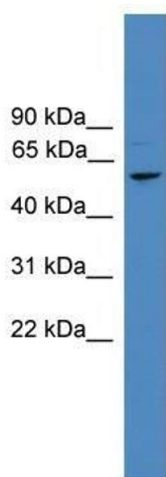
Buffer: Lyophilized powder. Add 50 µL of distilled water. Final antibody concentration is 1 mg/mL in PBS buffer.

Handling Advice: Avoid repeated freeze/thaw cycles.

Storage: 4 °C/-20 °C

Storage Comment: Store at 4 °C, following reconstitution, aliquot and store at -20 °C.

Images



Western Blotting

Image 1. FBXL16 antibody used at 0.2-1 ug/ml to detect target protein.