

Datasheet for ABIN928686
anti-ZPBP2 antibody (N-Term)



[Go to Product page](#)

1 Image

Overview

Quantity:	100 µL
Target:	ZPBP2
Binding Specificity:	N-Term
Reactivity:	Human
Host:	Rabbit
Clonality:	Polyclonal
Conjugate:	This ZPBP2 antibody is un-conjugated
Application:	Western Blotting (WB)

Product Details

Immunogen:	ZPBP2 antibody was raised in rabbit using the N terminal of ZPBP2 as the immunogen
Purification:	Purified

Target Details

Target:	ZPBP2
Alternative Name:	ZPBP2 (ZPBP2 Products)
Background:	ZPBP2 may be implicated in gamete interaction during fertilization. Synonyms: Polyclonal ZPBP2 antibody, Anti-ZPBP2 antibody, zona pellucida binding protein 2 antibody, MGC41930 antibody, ZPBPL antibody.

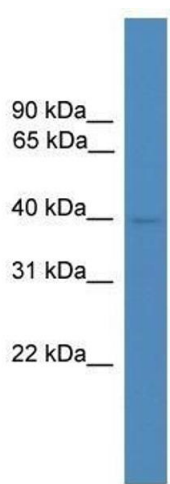
Application Details

Application Notes:	WB: 0.2-1 µg/mL Optimal conditions should be determined by the investigator.
Comment:	ZPBP2 Blocking Peptide, catalog no. 33R-6236, is also available for use as a blocking control in assays to test for specificity of this ZPBP2 antibody
Restrictions:	For Research Use only

Handling

Format:	Lyophilized
Concentration:	Lot specific
Buffer:	Lyophilized powder. Add 50 µL of distilled water. Final antibody concentration is 1 mg/mL in PBS buffer.
Handling Advice:	Avoid repeated freeze/thaw cycles.
Storage:	4 °C/-20 °C
Storage Comment:	Store at 4 °C, following reconstitution, aliquot and store at -20 °C.

Images



Western Blotting

Image 1. ZPBP2 antibody used at 0.2-1 ug/ml to detect target protein.