

## Datasheet for ABIN928694 **anti-PDHA2 antibody (N-Term)**



[Go to Product page](#)

### 1 Image

#### Overview

Quantity:	100 µL
Target:	PDHA2 (PDHa2)
Binding Specificity:	N-Term
Reactivity:	Human
Host:	Rabbit
Clonality:	Polyclonal
Conjugate:	This PDHA2 antibody is un-conjugated
Application:	Western Blotting (WB)

#### Product Details

Immunogen:	PDHA2 antibody was raised in rabbit using the N terminal of PDHA2 as the immunogen
Purification:	Purified

#### Target Details

Target:	PDHA2 (PDHa2)
Alternative Name:	PDHA2 ( <a href="#">PDHa2 Products</a> )
Background:	The pyruvate dehydrogenase complex catalyzes the overall conversion of pyruvate to acetyl-CoA and CO <sub>2</sub> . It contains multiple copies of three enzymatic components: pyruvate dehydrogenase (E1), dihydrolipoamide acetyltransferase (E2) and lipoamide dehydrogenase (E3). Synonyms: Polyclonal PDHA2 antibody, Anti-PDHA2 antibody, pyruvate dehydrogenase, lipoamide alpha 2 antibody, MGC149517 antibody, MGC149518 antibody, PDHAL antibody.

## Target Details

---

Pathways: [Warburg Effect](#)

## Application Details

---

Application Notes: WB: 0.2-1 µg/mL  
Optimal conditions should be determined by the investigator.

Comment: PDHA2 Blocking Peptide, catalog no. 33R-8060, is also available for use as a blocking control in assays to test for specificity of this PDHA2 antibody

Restrictions: For Research Use only

## Handling

---

Format: Lyophilized

Concentration: Lot specific

Buffer: Lyophilized powder. Add 50 µL of distilled water. Final antibody concentration is 1 mg/mL in PBS buffer.

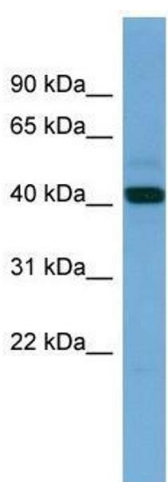
Handling Advice: Avoid repeated freeze/thaw cycles.

Storage: 4 °C/-20 °C

Storage Comment: Store at 4 °C, following reconstitution, aliquot and store at -20 °C.

## Images

---



### Western Blotting

**Image 1.** PDHA2 antibody used at 0.2-1 ug/ml to detect target protein.