

Datasheet for ABIN928696
anti-NBR1 antibody (C-Term)



[Go to Product page](#)

1 Image

Overview

Quantity:	100 µL
Target:	NBR1
Binding Specificity:	C-Term
Reactivity:	Human, Mouse
Host:	Rabbit
Clonality:	Polyclonal
Conjugate:	This NBR1 antibody is un-conjugated
Application:	Western Blotting (WB)

Product Details

Immunogen:	Nbr1 antibody was raised in rabbit using the C terminal of Nbr1 as the immunogen
Cross-Reactivity:	Mouse (Murine)
Purification:	Purified

Target Details

Target:	NBR1
Alternative Name:	Nbr1 (NBR1 Products)
Background:	Nbr1 acts probably as a receptor for selective autophagosomal degradation of ubiquitinated targets. Synonyms: Polyclonal Nbr1 antibody, Anti-Nbr1 antibody, neighbor of Brca1 gene 1 antibody, mKIAA0049 antibody.

Target Details

Pathways: [Autophagy](#)

Application Details

Application Notes: WB: 0.2-1 µg/mL
Optimal conditions should be determined by the investigator.

Comment: Nbr1 Blocking Peptide, catalog no. 33R-7115, is also available for use as a blocking control in assays to test for specificity of this Nbr1 antibody

Restrictions: For Research Use only

Handling

Format: Lyophilized

Concentration: Lot specific

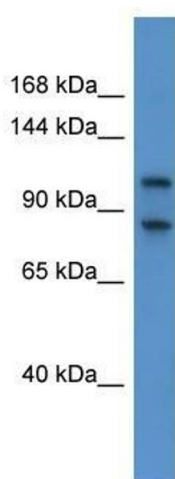
Buffer: Lyophilized powder. Add 50 µL of distilled water. Final antibody concentration is 1 mg/mL in PBS buffer.

Handling Advice: Avoid repeated freeze/thaw cycles.

Storage: 4 °C/-20 °C

Storage Comment: Store at 4 °C, following reconstitution, aliquot and store at -20 °C.

Images



Western Blotting

Image 1. Nbr1 antibody used at 0.2-1 ug/ml to detect target protein.