

Datasheet for ABIN928702  
**anti-SPA17 antibody (N-Term)**



[Go to Product page](#)

1 Image

## Overview

Quantity:	100 µL
Target:	SPA17
Binding Specificity:	N-Term
Reactivity:	Human
Host:	Rabbit
Clonality:	Polyclonal
Conjugate:	This SPA17 antibody is un-conjugated
Application:	Western Blotting (WB)

## Product Details

Immunogen:	SPA17 antibody was raised in rabbit using the N terminal of SPA17 as the immunogen
Purification:	Purified

## Target Details

Target:	SPA17
Alternative Name:	SPA17 ( <a href="#">SPA17 Products</a> )
Background:	This gene encodes a protein present at the cell surface. The N-terminus has sequence similarity to human cAMP-dependent protein kinase A (PKA) type II alpha regulatory subunit (RIIa) while the C-terminus has an IQ calmodulin-binding motif. The central portion of the protein has carbohydrate binding motifs and likely functions in cell-cell adhesion. The protein was initially characterized by its involvement in the binding of sperm to the zona pellucida of the oocyte.

## Target Details

Recent studies indicate that it is also involved in additional cell-cell adhesion functions such as immune cell migration and metastasis. A retrotransposed pseudogene is present on chromosome 10q22. Synonyms: Polyclonal SPA17 antibody, Anti-SPA17 antibody, sperm autoantigenic protein 17 antibody, SP17 antibody, SP17-1 antibody.

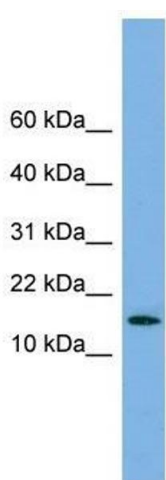
## Application Details

Application Notes:	WB: 0.2-1 µg/mL Optimal conditions should be determined by the investigator.
Comment:	SPA17 Blocking Peptide, catalog no. 33R-6445, is also available for use as a blocking control in assays to test for specificity of this SPA17 antibody
Restrictions:	For Research Use only

## Handling

Format:	Lyophilized
Concentration:	Lot specific
Buffer:	Lyophilized powder. Add 50 µL of distilled water. Final antibody concentration is 1 mg/mL in PBS buffer.
Handling Advice:	Avoid repeated freeze/thaw cycles.
Storage:	4 °C/-20 °C
Storage Comment:	Store at 4 °C, following reconstitution, aliquot and store at -20 °C.

## Images



### Western Blotting

**Image 1.** Western Blot showing SPA17 antibody used at a concentration of 1-2 ug/ml to detect its target protein.