

Datasheet for ABIN928709 **anti-ASRGL1 antibody (C-Term)**



[Go to Product page](#)

1 Image

Overview

Quantity:	100 µL
Target:	ASRGL1
Binding Specificity:	C-Term
Reactivity:	Human, Mouse
Host:	Rabbit
Clonality:	Polyclonal
Conjugate:	This ASRGL1 antibody is un-conjugated
Application:	Western Blotting (WB)

Product Details

Immunogen:	Asrgl1 antibody was raised in rabbit using the C terminal of Asrgl1 as the immunogen
Cross-Reactivity:	Mouse (Murine)
Purification:	Purified

Target Details

Target:	ASRGL1
Alternative Name:	Asrgl1 (ASRGL1 Products)
Background:	Asrgl1 acts in asparagine catabolism. Asrgl1 may be involved in astroglial production of L-aspartate, which can act as an excitatory neurotransmitter in some brain regions. Synonyms: Polyclonal Asrgl1 antibody, Anti-Asrgl1 antibody, asparaginase like 1 antibody, 2410004D18Rik antibody, ALP antibody, ALP1 antibody, AU040643 antibody, AW060375 antibody.

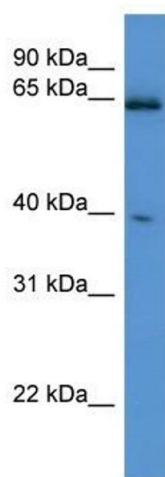
Application Details

Application Notes:	WB: 0.2-1 µg/mL Optimal conditions should be determined by the investigator.
Comment:	Asrgl1 Blocking Peptide, catalog no. 33R-1331, is also available for use as a blocking control in assays to test for specificity of this Asrgl1 antibody
Restrictions:	For Research Use only

Handling

Format:	Lyophilized
Concentration:	Lot specific
Buffer:	Lyophilized powder. Add 50 µL of distilled water. Final antibody concentration is 1 mg/mL in PBS buffer.
Handling Advice:	Avoid repeated freeze/thaw cycles.
Storage:	4 °C/-20 °C
Storage Comment:	Store at 4 °C, following reconstitution, aliquot and store at -20 °C.

Images



Western Blotting

Image 1. Western Blot showing Asrgl1 antibody used at a concentration of 1-2 ug/ml to detect its target protein.