

## Datasheet for ABIN928712 **anti-GK2 antibody (N-Term)**



[Go to Product page](#)

### 1 Image

#### Overview

Quantity:	100 µL
Target:	GK2
Binding Specificity:	N-Term
Reactivity:	Human
Host:	Rabbit
Clonality:	Polyclonal
Conjugate:	This GK2 antibody is un-conjugated
Application:	Western Blotting (WB)

#### Product Details

Immunogen:	GK2 antibody was raised in rabbit using the N terminal of GK2 as the immunogen
Purification:	Purified

#### Target Details

Target:	GK2
Alternative Name:	GK2 ( <a href="#">GK2 Products</a> )
Background:	GK2 belongs to the FGGY kinase family. GK2 is a key enzyme in the regulation of glycerol uptake and metabolism. Synonyms: Polyclonal GK2 antibody, Anti-GK2 antibody, glycerol kinase 2 antibody, GKP2 antibody, GKTA antibody.

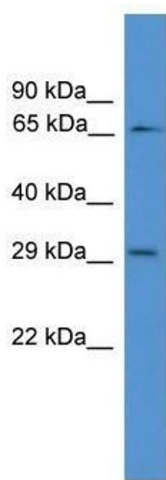
## Application Details

Application Notes:	WB: 0.2-1 µg/mL Optimal conditions should be determined by the investigator.
Comment:	GK2 Blocking Peptide, catalog no. 33R-2026, is also available for use as a blocking control in assays to test for specificity of this GK2 antibody
Restrictions:	For Research Use only

## Handling

Format:	Lyophilized
Concentration:	Lot specific
Buffer:	Lyophilized powder. Add 50 µL of distilled water. Final antibody concentration is 1 mg/mL in PBS buffer.
Handling Advice:	Avoid repeated freeze/thaw cycles.
Storage:	4 °C/-20 °C
Storage Comment:	Store at 4 °C, following reconstitution, aliquot and store at -20 °C.

## Images



### Western Blotting

**Image 1.** Western Blot showing GK2 antibody used at a concentration of 1-2 µg/ml to detect its target protein.