

Datasheet for ABIN928721

**anti-LTA4H antibody (N-Term)**[Go to Product page](#)**1** Image

## Overview

Quantity:	100 µL
Target:	LTA4H
Binding Specificity:	N-Term
Reactivity:	Human
Host:	Rabbit
Clonality:	Polyclonal
Conjugate:	This LTA4H antibody is un-conjugated
Application:	Western Blotting (WB)

## Product Details

Immunogen:	LTA4 H antibody was raised in rabbit using the N terminal of LTA4 as the immunogen
Purification:	Purified

## Target Details

Target:	LTA4H
Alternative Name:	LTA4H ( <a href="#">LTA4H Products</a> )
Background:	LTA4H hydrolyzes an epoxide moiety of leukotriene A4 (LTA-4) to form leukotriene B4 (LTB-4). The enzyme also has some peptidase activity. Synonyms: Polyclonal LTA4H antibody, Anti-LTA4H antibody, leukotriene A4 hydrolase antibody.

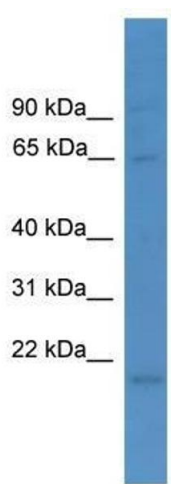
## Application Details

Application Notes:	WB: 0.2-1 µg/mL Optimal conditions should be determined by the investigator.
Comment:	LTA4H Blocking Peptide, catalog no. 33R-4201, is also available for use as a blocking control in assays to test for specificity of this LTA4H antibody
Restrictions:	For Research Use only

## Handling

Format:	Lyophilized
Concentration:	Lot specific
Buffer:	Lyophilized powder. Add 50 µL of distilled water. Final antibody concentration is 1 mg/mL in PBS buffer.
Handling Advice:	Avoid repeated freeze/thaw cycles.
Storage:	4 °C/-20 °C
Storage Comment:	Store at 4 °C, following reconstitution, aliquot and store at -20 °C.

## Images



### Western Blotting

**Image 1.** Western Blot showing LTA4H antibody used at a concentration of 1-2 ug/ml to detect its target protein.