

Datasheet for ABIN928738

**anti-RPSA/Laminin Receptor antibody (N-Term)**[Go to Product page](#)**1** Image

## Overview

Quantity:	100 µL
Target:	RPSA/Laminin Receptor (RPSA)
Binding Specificity:	N-Term
Reactivity:	Human, Mouse
Host:	Rabbit
Clonality:	Polyclonal
Conjugate:	This RPSA/Laminin Receptor antibody is un-conjugated
Application:	Western Blotting (WB)

## Product Details

Immunogen:	Rpsa antibody was raised in rabbit using the N terminal of Rpsa as the immunogen
Cross-Reactivity:	Mouse (Murine)
Purification:	Purified

## Target Details

Target:	RPSA/Laminin Receptor (RPSA)
Alternative Name:	Rpsa ( <a href="#">RPSA Products</a> )
Background:	Rpsa is required for the assembly and/or stability of the 40S ribosomal subunit. It is also required for the processing of the 20S rRNA-precursor to mature 18S rRNA in a late step of the maturation of 40S ribosomal subunits. It also functions as a cell surface receptor for laminin. It plays a role in cell adhesion to the basement membrane and in the consequent activation of

## Target Details

---

signaling transduction pathways. It may play a role in cell fate determination and tissue morphogenesis. It also acts as a receptor for several other ligands, including the pathogenic prion protein, viruses, and bacteria. It enables malignant tumor cells to penetrate laminin tissue and vessel barriers and activates precursor thymic anti-OFA/iLRP specific cytotoxic T cell. It may induce CD8 T-suppressor cells secreting IL-10. Synonyms: Polyclonal Rpsa antibody, Anti-Rpsa antibody, ribosomal protein SA antibody, 67kDa antibody, 67lr antibody, AL022858 antibody, Lamr antibody, Lamr1 antibody, Lamr1 antibody, MGC117921 antibody, MGC118614 antibody, MLR antibody, P40 antibody, P40-3 antibody, P40-8 antibody.

Pathways: [Ribonucleoprotein Complex Subunit Organization](#), [Ribosome Assembly](#)

## Application Details

---

Application Notes: Optimal conditions should be determined by the investigator.

Comment: Rpsa Blocking Peptide, catalog no. 33R-7653, is also available for use as a blocking control in assays to test for specificity of this Rpsa antibody

Restrictions: For Research Use only

## Handling

---

Format: Lyophilized

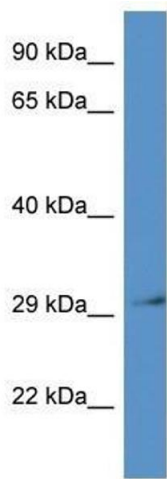
Concentration: Lot specific

Buffer: Lyophilized powder. Add 50  $\mu$ L of distilled water. Final antibody concentration is 1 mg/mL in PBS buffer.

Handling Advice: Avoid repeated freeze/thaw cycles.

Storage: 4 °C/-20 °C

Storage Comment: Store at 4 °C, following reconstitution, aliquot and store at -20 °C.



### Western Blotting

**Image 1.** Western Blot showing Rpsa antibody used at a concentration of 1.0 ug/ml against Mouse Heart Lysate