

Datasheet for ABIN928746
anti-GZMA antibody (C-Term)



[Go to Product page](#)

1 Image

Overview

Quantity:	100 µL
Target:	GZMA
Binding Specificity:	C-Term
Reactivity:	Human
Host:	Rabbit
Clonality:	Polyclonal
Conjugate:	This GZMA antibody is un-conjugated
Application:	Western Blotting (WB)

Product Details

Immunogen:	GZMA antibody was raised in rabbit using the C terminal of GZMA as the immunogen
Purification:	Purified

Target Details

Target:	GZMA
Alternative Name:	GZMA (GZMA Products)
Background:	Cytolytic T lymphocytes (CTL) and natural killer (NK) cells share the remarkable ability to recognize, bind, and lyse specific target cells. They are thought to protect their host by lysing cells bearing on their surface 'nonself' antigens, usually peptides or proteins resulting from infection by intracellular pathogens. The protein described here is a T cell- and natural killer cell-specific serine protease that may function as a common component necessary for lysis of

Target Details

target cells by cytotoxic T lymphocytes and natural killer cells. Synonyms: Polyclonal GZMA antibody, Anti-GZMA antibody, granzyme A, granzyme 1, cytotoxic T-lymphocyte-associated serine esterase 3 antibody, CTLA3 antibody, HFSP antibody.

Pathways: [Apoptosis](#)

Application Details

Application Notes: WB: 0.2-1 µg/mL
Optimal conditions should be determined by the investigator.

Comment: GZMA Blocking Peptide, catalog no. 33R-5360, is also available for use as a blocking control in assays to test for specificity of this GZMA antibody

Restrictions: For Research Use only

Handling

Format: Lyophilized

Concentration: Lot specific

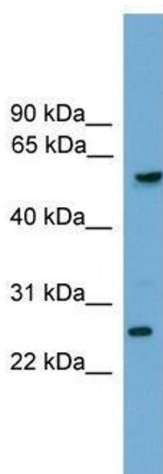
Buffer: Lyophilized powder. Add 50 µL of distilled water. Final antibody concentration is 1 mg/mL in PBS buffer.

Handling Advice: Avoid repeated freeze/thaw cycles.

Storage: 4 °C/-20 °C

Storage Comment: Store at 4 °C, following reconstitution, aliquot and store at -20 °C.

Images



Western Blotting

Image 1. GZMA antibody used at 0.2-1 ug/ml to detect target protein.