

Datasheet for ABIN928747
anti-FBXL4 antibody (N-Term)



[Go to Product page](#)

1 Image

Overview

Quantity:	100 µL
Target:	FBXL4
Binding Specificity:	N-Term
Reactivity:	Human
Host:	Rabbit
Clonality:	Polyclonal
Conjugate:	This FBXL4 antibody is un-conjugated
Application:	Western Blotting (WB)

Product Details

Immunogen:	FBXL4 antibody was raised in rabbit using the N terminal of FBXL4 as the immunogen
Purification:	Purified

Target Details

Target:	FBXL4
Alternative Name:	FBXL4 (FBXL4 Products)
Background:	This gene encodes a member of the F-box protein family which is characterized by an approximately 40 amino acid motif, the F-box. The F-box proteins constitute one of the four subunits of ubiquitin protein ligase complex called SCFs, which function in phosphorylation-dependent ubiquitination. The F-box proteins are divided into 3 classes: Fbws containing WD-40 domains, Fbls containing leucine-rich repeats, and Fbxs containing either different protein-

Target Details

protein interaction modules or no recognizable motifs. The protein encoded by this gene belongs to the Fbls class and, in addition to an F-box, contains at least 9 tandem leucine-rich repeats. Synonyms: Polyclonal FBXL4 antibody, Anti-FBXL4 antibody, F-box and leucine-rich repeat protein 4 antibody, FBL4 antibody, FBL5 antibody.

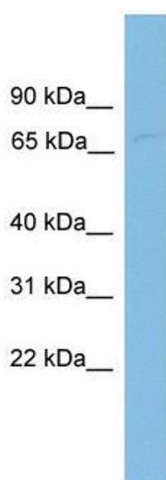
Application Details

Application Notes:	WB: 0.2-1 µg/mL Optimal conditions should be determined by the investigator.
Comment:	FBXL4 Blocking Peptide, catalog no. 33R-9655, is also available for use as a blocking control in assays to test for specificity of this FBXL4 antibody
Restrictions:	For Research Use only

Handling

Format:	Lyophilized
Concentration:	Lot specific
Buffer:	Lyophilized powder. Add 50 µL of distilled water. Final antibody concentration is 1 mg/mL in PBS buffer.
Handling Advice:	Avoid repeated freeze/thaw cycles.
Storage:	4 °C/-20 °C
Storage Comment:	Store at 4 °C, following reconstitution, aliquot and store at -20 °C.

Images



Western Blotting

Image 1. Western Blot showing FBXL4 antibody used at a concentration of 1-2 µg/ml to detect its target protein.