

## Datasheet for ABIN928749 **anti-NXT1 antibody (N-Term)**



[Go to Product page](#)

### 1 Image

#### Overview

Quantity:	100 µL
Target:	NXT1
Binding Specificity:	N-Term
Reactivity:	Human
Host:	Rabbit
Clonality:	Polyclonal
Conjugate:	This NXT1 antibody is un-conjugated
Application:	Western Blotting (WB)

#### Product Details

Immunogen:	NXT1 antibody was raised in rabbit using the N terminal of NXT1 as the immunogen
Purification:	Purified

#### Target Details

Target:	NXT1
Alternative Name:	NXT1 ( <a href="#">NXT1 Products</a> )
Background:	The protein encoded by this gene is located in the nuclear envelope. It has protein similarity to nuclear transport factor 2. This protein functions as a nuclear export factor in both RAN (Ras-related nuclear protein)- and CRM1 (required for chromosome region maintenance)-dependent pathways. It is found to stimulate the export of U1 snRNA in RAN- and CRM1-dependent pathways and the export of tRNA and mRNA in a CRM1-independent pathway. The encoded

## Target Details

protein heterodimerizes with Tap protein and may regulate the ability of Tap protein to mediate nuclear mRNA export. The use of alternate polyadenylation sites has been found for this gene. Synonyms: Polyclonal NXT1 antibody, Anti-NXT1 antibody, NTF2-like export factor 1 antibody, MTR2 antibody, P15 antibody.

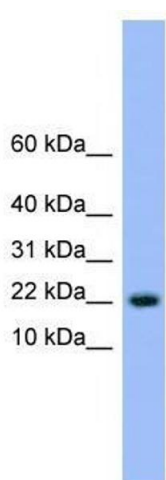
## Application Details

Application Notes:	WB: 0.2-1 µg/mL Optimal conditions should be determined by the investigator.
Comment:	NXT1 Blocking Peptide, catalog no. 33R-3600, is also available for use as a blocking control in assays to test for specificity of this NXT1 antibody
Restrictions:	For Research Use only

## Handling

Format:	Lyophilized
Concentration:	Lot specific
Buffer:	Lyophilized powder. Add 50 µL of distilled water. Final antibody concentration is 1 mg/mL in PBS buffer.
Handling Advice:	Avoid repeated freeze/thaw cycles.
Storage:	4 °C/-20 °C
Storage Comment:	Store at 4 °C, following reconstitution, aliquot and store at -20 °C.

## Images



### Western Blotting

**Image 1.** NXT1 antibody used at 0.2-1 µg/ml to detect target protein.