

Datasheet for ABIN928759 **anti-KLHL20 antibody (C-Term)**



[Go to Product page](#)

1 Image

Overview

| | |
|----------------------|---------------------------------------|
| Quantity: | 100 µL |
| Target: | KLHL20 |
| Binding Specificity: | C-Term |
| Reactivity: | Human |
| Host: | Rabbit |
| Clonality: | Polyclonal |
| Conjugate: | This KLHL20 antibody is un-conjugated |
| Application: | Western Blotting (WB) |

Product Details

| | |
|---------------|--|
| Immunogen: | KLHL20 antibody was raised in rabbit using the C terminal of KLHL20 as the immunogen |
| Purification: | Purified |

Target Details

| | |
|-------------------|--|
| Target: | KLHL20 |
| Alternative Name: | KLHL20 (KLHL20 Products) |
| Background: | <p>The protein encoded by this gene is a member of the kelch family of proteins, which is characterized by a 44-56 amino acid repeat motif. The kelch motif appears in many different polypeptide contexts and contains multiple potential protein-protein contact sites. Members of this family are present both throughout the cell and extracellularly, with diverse activities.</p> <p>Synonyms: Polyclonal KLHL20 antibody, Anti-KLHL20 antibody, kelch-like 20, Drosophila</p> |

Target Details

antibody, KHLHX antibody, KLEIP antibody, KLHLX antibody, RP3-383J4.3 antibody.

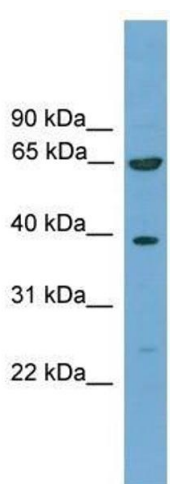
Application Details

| | |
|--------------------|--|
| Application Notes: | WB: 0.2-1 µg/mL Optimal conditions should be determined by the investigator. |
| Comment: | KLHL20 Blocking Peptide, catalog no. 33R-6829, is also available for use as a blocking control in assays to test for specificity of this KLHL20 antibody |
| Restrictions: | For Research Use only |

Handling

| | |
|------------------|--|
| Format: | Lyophilized |
| Concentration: | Lot specific |
| Buffer: | Lyophilized powder. Add 50 µL of distilled water. Final antibody concentration is 1 mg/mL in PBS buffer. |
| Handling Advice: | Avoid repeated freeze/thaw cycles. |
| Storage: | 4 °C/-20 °C |
| Storage Comment: | Store at 4 °C, following reconstitution, aliquot and store at -20 °C. |

Images



Western Blotting

Image 1. KLHL20 antibody used at 0.2-1 µg/ml to detect target protein.