

Datasheet for ABIN928760
anti-VWA5A antibody (N-Term)



[Go to Product page](#)

1 Image

Overview

Quantity:	100 µL
Target:	VWA5A
Binding Specificity:	N-Term
Reactivity:	Human
Host:	Rabbit
Clonality:	Polyclonal
Conjugate:	This VWA5A antibody is un-conjugated
Application:	Western Blotting (WB)

Product Details

Immunogen:	LOH11 CR1 antibody was raised in rabbit using the N terminal of LOH11 R1 as the immunogen
Purification:	Purified

Target Details

Target:	VWA5A
Alternative Name:	LOH11CR2A (VWA5A Products)
Background:	LOH11CR2A may play a role in tumorigenesis as a tumor suppressor. Altered expression of this protein and disruption of the molecular pathway it is involved in, may contribute directly to or modify tumorigenesis. Synonyms: Polyclonal LOH11CR2A antibody, Anti-LOH11CR2A antibody, von Willebrand factor A domain containing 5A antibody, BCSC-1 antibody, BCSC1 antibody.

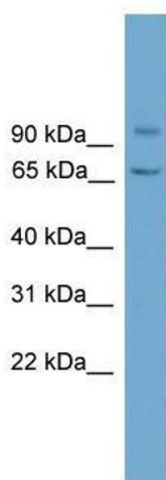
Application Details

Application Notes:	WB: 0.2-1 µg/mL Optimal conditions should be determined by the investigator.
Comment:	LOH11CR2A Blocking Peptide, catalog no. 33R-9184, is also available for use as a blocking control in assays to test for specificity of this LOH11CR2A antibody
Restrictions:	For Research Use only

Handling

Format:	Lyophilized
Concentration:	Lot specific
Buffer:	Lyophilized powder. Add 50 µL of distilled water. Final antibody concentration is 1 mg/mL in PBS buffer.
Handling Advice:	Avoid repeated freeze/thaw cycles.
Storage:	4 °C/-20 °C
Storage Comment:	Store at 4 °C, following reconstitution, aliquot and store at -20 °C.

Images



Western Blotting

Image 1. LOH11CR2A antibody used at 0.2-1 ug/ml to detect target protein.