

Datasheet for ABIN928764
anti-SEC31A antibody (N-Term)



[Go to Product page](#)

1 Image

Overview

Quantity:	100 µL
Target:	SEC31A
Binding Specificity:	N-Term
Reactivity:	Human, Rat
Host:	Rabbit
Clonality:	Polyclonal
Conjugate:	This SEC31A antibody is un-conjugated
Application:	Western Blotting (WB)

Product Details

Immunogen:	Sec31 a antibody was raised in rabbit using the N terminal of Sec31 as the immunogen
Cross-Reactivity:	Rat (Rattus)
Purification:	Purified

Target Details

Target:	SEC31A
Alternative Name:	Sec31a (SEC31A Products)
Background:	Sec31a is a putative membrane-associated endosomal phosphoprotein. Synonyms: Polyclonal Sec31a antibody, Anti-Sec31a antibody, SEC31 homolog A, S. cerevisiae antibody, VAP1 antibody, Sec3111 antibody, MGC93320 antibody, Sec31a antibody.

Target Details

Pathways: [ER-Nucleus Signaling](#)

Application Details

Application Notes: Optimal conditions should be determined by the investigator.

Comment: Sec31a Blocking Peptide, catalog no. 33R-2016, is also available for use as a blocking control in assays to test for specificity of this Sec31a antibody

Restrictions: For Research Use only

Handling

Format: Lyophilized

Concentration: Lot specific

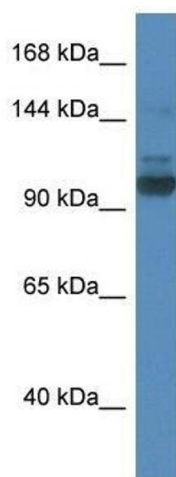
Buffer: Lyophilized powder. Add 50 μ L of distilled water. Final antibody concentration is 1 mg/mL in PBS buffer.

Handling Advice: Avoid repeated freeze/thaw cycles.

Storage: 4 °C/-20 °C

Storage Comment: Store at 4 °C, following reconstitution, aliquot and store at -20 °C.

Images



Western Blotting

Image 1. Western Blot showing Sec31a antibody used at a concentration of 1.0 μ g/ml against Rat Brain Lysate