

Datasheet for ABIN928768
anti-PHLDB1 antibody (Middle Region)



[Go to Product page](#)

1 Image

Overview

Quantity:	100 µL
Target:	PHLDB1
Binding Specificity:	Middle Region
Reactivity:	Human
Host:	Rabbit
Clonality:	Polyclonal
Conjugate:	This PHLDB1 antibody is un-conjugated
Application:	Western Blotting (WB)

Product Details

Immunogen:	PHLDB1 antibody was raised in rabbit using the middle region of PHLDB1 as the immunogen
Purification:	Purified

Target Details

Target:	PHLDB1
Alternative Name:	PHLDB1 (PHLDB1 Products)
Background:	The function of this protein remains unknown. Synonyms: Polyclonal PHLDB1 antibody, Anti-PHLDB1 antibody, pleckstrin homology-like domain, family B, member 1 antibody, DKFZp686H039 antibody, DKFZp686O24210 antibody, FLJ00141 antibody, FLJ90266 antibody, KIAA0638 antibody, LL5A antibody, MGC111531 antibody.

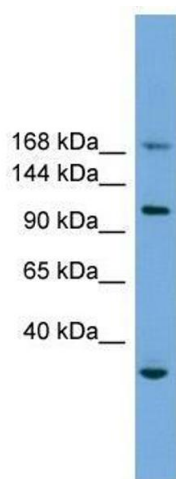
Application Details

Application Notes:	WB: 0.2-1 µg/mL Optimal conditions should be determined by the investigator.
Comment:	PHLDB1 Blocking Peptide, catalog no. 33R-3483, is also available for use as a blocking control in assays to test for specificity of this PHLDB1 antibody
Restrictions:	For Research Use only

Handling

Format:	Lyophilized
Concentration:	Lot specific
Buffer:	Lyophilized powder. Add 50 µL of distilled water. Final antibody concentration is 1 mg/mL in PBS buffer.
Handling Advice:	Avoid repeated freeze/thaw cycles.
Storage:	4 °C/-20 °C
Storage Comment:	Store at 4 °C, following reconstitution, aliquot and store at -20 °C.

Images



Western Blotting

Image 1. PHLDB1 antibody used at 0.2-1 µg/ml to detect target protein.