

Datasheet for ABIN928786
anti-BEND6 antibody (C-Term)



[Go to Product page](#)

1 Image

Overview

Quantity:	100 µL
Target:	BEND6
Binding Specificity:	C-Term
Reactivity:	Human, Rat
Host:	Rabbit
Clonality:	Polyclonal
Conjugate:	This BEND6 antibody is un-conjugated
Application:	Western Blotting (WB)

Product Details

Immunogen:	Bend6 antibody was raised in rabbit using the C terminal of Bend6 as the immunogen
Cross-Reactivity:	Rat (Rattus)
Purification:	Purified

Target Details

Target:	BEND6
Alternative Name:	Bend6 (BEND6 Products)
Background:	The function of this protein remains unknown. Synonyms: Polyclonal Bend6 antibody, Anti-Bend6 antibody, BEN domain containing antibody, RGD1310392 antibody, Bend6 antibody.

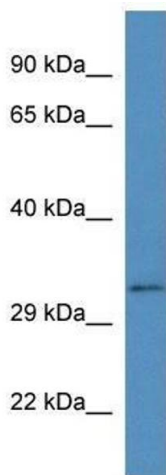
Application Details

Application Notes:	Optimal conditions should be determined by the investigator.
Comment:	Bend6 Blocking Peptide, catalog no. 33R-2932, is also available for use as a blocking control in assays to test for specificity of this Bend6 antibody
Restrictions:	For Research Use only

Handling

Format:	Lyophilized
Concentration:	Lot specific
Buffer:	Lyophilized powder. Add 50 μ L of distilled water. Final antibody concentration is 1 mg/mL in PBS buffer.
Handling Advice:	Avoid repeated freeze/thaw cycles.
Storage:	4 °C/-20 °C
Storage Comment:	Store at 4 °C, following reconstitution, aliquot and store at -20 °C.

Images



Western Blotting

Image 1. Western Blot showing Bend6 antibody used at a concentration of 1.0 ug/ml against Rat Lung Lysate