

Datasheet for ABIN928796 **anti-FIL1d antibody (C-Term)**



[Go to Product page](#)

1 Image

Overview

Quantity:	100 µL
Target:	FIL1d
Binding Specificity:	C-Term
Reactivity:	Human, Rat
Host:	Rabbit
Clonality:	Polyclonal
Conjugate:	This FIL1d antibody is un-conjugated
Application:	Western Blotting (WB)

Product Details

Immunogen:	IL1 F5 antibody was raised in rabbit using the C terminal of IL1 5 as the immunogen
Cross-Reactivity:	Rat (Rattus)
Purification:	Purified

Target Details

Target:	FIL1d
Alternative Name:	IL1F5 (FIL1d Products)
Background:	The protein encoded by this gene is a member of the interleukin 1 cytokine family. This cytokine was shown to specifically inhibit the activation of NF-kappaB induced by interleukin 1 family, member 6 (IL1F6). This gene and eight other interleukin 1 family genes form a cytokine gene cluster on chromosome 2. Synonyms: Polyclonal Il1f5 antibody, Anti-Il1f5 antibody, interleukin 1

Target Details

family, member 5, delta antibody, IL1f5 antibody.

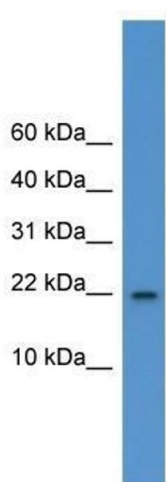
Application Details

Application Notes:	WB: 0.2-1 µg/mL Optimal conditions should be determined by the investigator.
Comment:	IL1F5 Blocking Peptide, catalog no. 33R-4997, is also available for use as a blocking control in assays to test for specificity of this IL1F5 antibody
Restrictions:	For Research Use only

Handling

Format:	Lyophilized
Concentration:	Lot specific
Buffer:	Lyophilized powder. Add 50 µL of distilled water. Final antibody concentration is 1 mg/mL in PBS buffer.
Handling Advice:	Avoid repeated freeze/thaw cycles.
Storage:	4 °C/-20 °C
Storage Comment:	Store at 4 °C, following reconstitution, aliquot and store at -20 °C.

Images



Western Blotting

Image 1. IL1f5 antibody used at 0.2-1 ug/ml to detect target protein.