

Datasheet for ABIN928803
anti-SEC14L3 antibody (C-Term)



[Go to Product page](#)

1 Image

Overview

Quantity:	100 µL
Target:	SEC14L3
Binding Specificity:	C-Term
Reactivity:	Human, Rat
Host:	Rabbit
Clonality:	Polyclonal
Conjugate:	This SEC14L3 antibody is un-conjugated
Application:	Western Blotting (WB)

Product Details

Immunogen:	Sec14 l3 antibody was raised in rabbit using the C terminal of Sec14 3 as the immunogen
Cross-Reactivity:	Rat (Rattus)
Purification:	Purified

Target Details

Target:	SEC14L3
Alternative Name:	Sec14l3 (SEC14L3 Products)
Background:	Sec14l3 is a probable hydrophobic ligand-binding protein, It may play a role in the transport of hydrophobic ligands like tocopherol, squalene and phospholipids. Synonyms: Polyclonal Sec14l3 antibody, Anti-Sec14l3 antibody, SEC14-like 3, S. cerevisiae antibody.

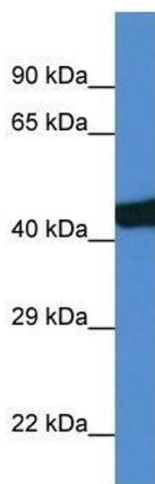
Application Details

Application Notes:	Optimal conditions should be determined by the investigator.
Comment:	Sec14I3 Blocking Peptide, catalog no. 33R-7856, is also available for use as a blocking control in assays to test for specificity of this Sec14I3 antibody
Restrictions:	For Research Use only

Handling

Format:	Lyophilized
Concentration:	Lot specific
Buffer:	Lyophilized powder. Add 50 μ L of distilled water. Final antibody concentration is 1 mg/mL in PBS buffer.
Handling Advice:	Avoid repeated freeze/thaw cycles.
Storage:	4 °C/-20 °C
Storage Comment:	Store at 4 °C, following reconstitution, aliquot and store at -20 °C.

Images



Western Blotting

Image 1. Western Blot showing Sec14I3 antibody used at a concentration of 1.0 μ g/ml against Rat Lung Lysate