

Datasheet for ABIN928823
anti-SPINK6 antibody (Middle Region)



[Go to Product page](#)

1 Image

Overview

Quantity:	100 µL
Target:	SPINK6
Binding Specificity:	Middle Region
Reactivity:	Human
Host:	Rabbit
Clonality:	Polyclonal
Conjugate:	This SPINK6 antibody is un-conjugated
Application:	Western Blotting (WB)

Product Details

Immunogen:	SPINK6 antibody was raised in rabbit using the middle region of SPINK6 as the immunogen
Purification:	Purified

Target Details

Target:	SPINK6
Alternative Name:	SPINK6 (SPINK6 Products)
Background:	The protein encoded by this gene is a Kazal-type serine protease inhibitor that acts on kallikrein-related peptidases in the skin. Two transcript variants the same protein have been found for this gene. Synonyms: Polyclonal SPINK6 antibody, Anti-SPINK6 antibody, serine peptidase inhibitor, Kazal type 6 antibody, BUSI2 antibody, MGC21394 antibody, UNQ844 antibody.

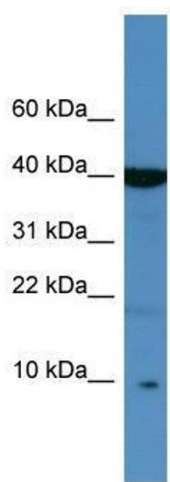
Application Details

Application Notes:	WB: 0.2-1 µg/mL Optimal conditions should be determined by the investigator.
Comment:	SPINK6 Blocking Peptide, catalog no. 33R-3226, is also available for use as a blocking control in assays to test for specificity of this SPINK6 antibody
Restrictions:	For Research Use only

Handling

Format:	Lyophilized
Concentration:	Lot specific
Buffer:	Lyophilized powder. Add 50 µL of distilled water. Final antibody concentration is 1 mg/mL in PBS buffer.
Handling Advice:	Avoid repeated freeze/thaw cycles.
Storage:	4 °C/-20 °C
Storage Comment:	Store at 4 °C, following reconstitution, aliquot and store at -20 °C.

Images



Western Blotting

Image 1. SPINK6 antibody used at 0.2-1 ug/ml to detect target protein.