

## Datasheet for ABIN928830 **anti-PPP2R2D antibody (C-Term)**



[Go to Product page](#)

### 1 Image

#### Overview

Quantity:	100 µL
Target:	PPP2R2D
Binding Specificity:	C-Term
Reactivity:	Human, Mouse
Host:	Rabbit
Clonality:	Polyclonal
Conjugate:	This PPP2R2D antibody is un-conjugated
Application:	Western Blotting (WB)

#### Product Details

Immunogen:	Ppp2 r2 antibody was raised in rabbit using the C terminal of Ppp2 2 as the immunogen
Cross-Reactivity:	Mouse (Murine)
Purification:	Purified

#### Target Details

Target:	PPP2R2D
Alternative Name:	Ppp2r2d ( <a href="#">PPP2R2D Products</a> )
Background:	Ppp2r2d is a B regulatory subunit of protein phosphatase 2A (PP2A) that plays a key role in cell cycle by controlling mitosis entry and exit. The activity of PP2A complexes containing PPP2R2D (PR55-delta) fluctuate during the cell cycle: the activity is high in interphase and low in mitosis. During mitosis, activity of PP2A is inhibited via interaction with phosphorylated ENSA and

## Target Details

ARPP19 inhibitors. Within the PP2A complexes, the B regulatory subunits modulate substrate selectivity and catalytic activity, and also may direct the localization of the catalytic enzyme to a particular subcellular compartment. Synonyms: Polyclonal Ppp2r2d antibody, Anti-Ppp2r2d antibody, protein phosphatase 2, regulatory subunit B, delta isoform antibody, 1300017E19Rik antibody, D7Ert753e antibody, MDS026 antibody.

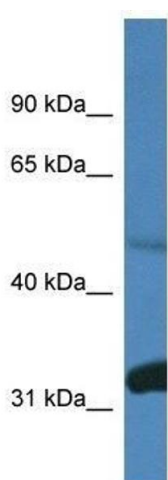
## Application Details

Application Notes:	Optimal conditions should be determined by the investigator.
Comment:	Ppp2r2d Blocking Peptide, catalog no. 33R-8132, is also available for use as a blocking control in assays to test for specificity of this Ppp2r2d antibody
Restrictions:	For Research Use only

## Handling

Format:	Lyophilized
Concentration:	Lot specific
Buffer:	Lyophilized powder. Add 50 $\mu$ L of distilled water. Final antibody concentration is 1 mg/mL in PBS buffer.
Handling Advice:	Avoid repeated freeze/thaw cycles.
Storage:	4 $^{\circ}$ C/-20 $^{\circ}$ C
Storage Comment:	Store at 4 $^{\circ}$ C, following reconstitution, aliquot and store at -20 $^{\circ}$ C.

## Images



### Western Blotting

**Image 1.** Western Blot showing Ppp2r2d antibody used at a concentration of 1.0  $\mu$ g/ml against Mouse Brain Lysate