

Datasheet for ABIN928831
anti-GIMAP6 antibody (C-Term)



[Go to Product page](#)

1 Image

Overview

Quantity:	100 µL
Target:	GIMAP6
Binding Specificity:	C-Term
Reactivity:	Human
Host:	Rabbit
Clonality:	Polyclonal
Conjugate:	This GIMAP6 antibody is un-conjugated
Application:	Western Blotting (WB)

Product Details

Immunogen:	GIMAP6 antibody was raised in rabbit using the C terminal of GIMAP6 as the immunogen
Purification:	Purified

Target Details

Target:	GIMAP6
Alternative Name:	GIMAP6 (GIMAP6 Products)
Background:	This gene encodes a protein belonging to the GTP-binding superfamily and to the immun-associated nucleotide (IAN) subfamily of nucleotide-binding proteins. In humans, IAN subfamily genes are located in a cluster at 7q36.1. Two transcript variants, one protein-coding and the other probably non-protein-coding, have been found for this gene. Synonyms: Polyclonal GIMAP6 antibody, Anti-GIMAP6 antibody, GTPase, IMAP family member 6 antibody,

Target Details

DKFZp686A01175 antibody, FLJ22690 antibody, IAN6 antibody, hIAN2 antibody.

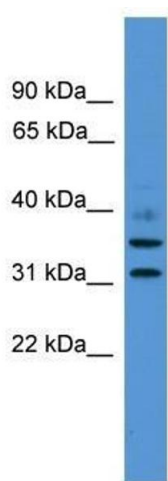
Application Details

Application Notes:	WB: 0.2-1 µg/mL Optimal conditions should be determined by the investigator.
Comment:	GIMAP6 Blocking Peptide, catalog no. 33R-3640, is also available for use as a blocking control in assays to test for specificity of this GIMAP6 antibody
Restrictions:	For Research Use only

Handling

Format:	Lyophilized
Concentration:	Lot specific
Buffer:	Lyophilized powder. Add 50 µL of distilled water. Final antibody concentration is 1 mg/mL in PBS buffer.
Handling Advice:	Avoid repeated freeze/thaw cycles.
Storage:	4 °C/-20 °C
Storage Comment:	Store at 4 °C, following reconstitution, aliquot and store at -20 °C.

Images



Western Blotting

Image 1. GIMAP6 antibody used at 0.2-1 ug/ml to detect target protein.