

Datasheet for ABIN928834
anti-RGL3 antibody (Middle Region)



[Go to Product page](#)

1 Image

Overview

Quantity:	100 µL
Target:	RGL3
Binding Specificity:	Middle Region
Reactivity:	Human
Host:	Rabbit
Clonality:	Polyclonal
Conjugate:	This RGL3 antibody is un-conjugated
Application:	Western Blotting (WB)

Product Details

Immunogen:	RGL3 antibody was raised in rabbit using the middle region of RGL3 as the immunogen
Purification:	Purified

Target Details

Target:	RGL3
Alternative Name:	RGL3 (RGL3 Products)
Background:	RGL3 is a guanine nucleotide exchange factor (GEF) for Ral-A. RGL3 is a potential effector of GTPase HRas and Ras-related protein M-Ras. RGL3 negatively regulates Elk-1-dependent gene induction downstream of HRas and MEKK1. Synonyms: Polyclonal RGL3 antibody, Anti-RGL3 antibody, ral guanine nucleotide dissociation stimulator-like 3 antibody, FLJ00153 antibody, FLJ32585 antibody, FLJ44275 antibody, MGC126805 antibody, MGC138163 antibody.

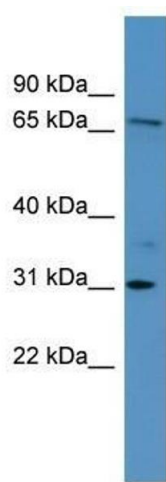
Application Details

Application Notes:	WB: 0.2-1 µg/mL Optimal conditions should be determined by the investigator.
Comment:	RGL3 Blocking Peptide, catalog no. 33R-4871, is also available for use as a blocking control in assays to test for specificity of this RGL3 antibody
Restrictions:	For Research Use only

Handling

Format:	Lyophilized
Concentration:	Lot specific
Buffer:	Lyophilized powder. Add 50 µL of distilled water. Final antibody concentration is 1 mg/mL in PBS buffer.
Handling Advice:	Avoid repeated freeze/thaw cycles.
Storage:	4 °C/-20 °C
Storage Comment:	Store at 4 °C, following reconstitution, aliquot and store at -20 °C.

Images



Western Blotting

Image 1. Western Blot showing RGL3 antibody used at a concentration of 1-2 µg/ml to detect its target protein.