

Datasheet for ABIN928836
anti-PDE4B antibody (N-Term)



[Go to Product page](#)

1 Image

Overview

Quantity:	100 µL
Target:	PDE4B
Binding Specificity:	N-Term
Reactivity:	Human, Mouse
Host:	Rabbit
Clonality:	Polyclonal
Conjugate:	This PDE4B antibody is un-conjugated
Application:	Western Blotting (WB)

Product Details

Immunogen:	Pde4 b antibody was raised in rabbit using the N terminal of Pde4 as the immunogen
Cross-Reactivity:	Mouse (Murine)
Purification:	Purified

Target Details

Target:	PDE4B
Alternative Name:	Pde4b (PDE4B Products)
Background:	The function of this protein remains unknown. Synonyms: Polyclonal Pde4b antibody, Anti-Pde4b antibody, phosphodiesterase 4B, cAMP specific antibody, Dpde4 antibody, R74983 antibody, dunce antibody.

Target Details

Pathways: [Cellular Response to Molecule of Bacterial Origin](#), [cAMP Metabolic Process](#), [Myometrial Relaxation and Contraction](#)

Application Details

Application Notes: Optimal conditions should be determined by the investigator.

Comment: Pde4b Blocking Peptide, catalog no. 33R-5530, is also available for use as a blocking control in assays to test for specificity of this Pde4b antibody

Restrictions: For Research Use only

Handling

Format: Lyophilized

Concentration: Lot specific

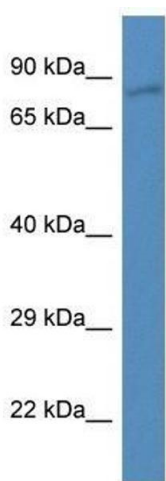
Buffer: Lyophilized powder. Add 50 μ L of distilled water. Final antibody concentration is 1 mg/mL in PBS buffer.

Handling Advice: Avoid repeated freeze/thaw cycles.

Storage: 4 $^{\circ}$ C/-20 $^{\circ}$ C

Storage Comment: Store at 4 $^{\circ}$ C, following reconstitution, aliquot and store at -20 $^{\circ}$ C.

Images



Western Blotting

Image 1. Western Blot showing Pde4b antibody used at a concentration of 1.0 μ g/ml against Mouse Heart Lysate