

Datasheet for ABIN928838
anti-Paralemmin antibody (N-Term)



[Go to Product page](#)

1 Image

Overview

Quantity:	100 µL
Target:	Paralemmin (PALM)
Binding Specificity:	N-Term
Reactivity:	Human
Host:	Rabbit
Clonality:	Polyclonal
Conjugate:	This Paralemmin antibody is un-conjugated
Application:	Western Blotting (WB)

Product Details

Immunogen:	PALM antibody was raised in rabbit using the N terminal of PALM as the immunogen
Purification:	Purified

Target Details

Target:	Paralemmin (PALM)
Alternative Name:	PALM (PALM Products)
Background:	This gene encodes a member of the paralemmin protein family. The product of this gene is a prenylated and palmitoylated phosphoprotein that associates with the cytoplasmic face of plasma membranes and is implicated in plasma membrane dynamics in neurons and other cell types. Several alternatively spliced transcript variants have been identified, but the full-length nature of only two transcript variants has been determined. Synonyms: Polyclonal PALM

Target Details

antibody, Anti-PALM antibody, paralemmin antibody, KIAA0270 antibody.

Pathways: [cAMP Metabolic Process](#), [Regulation of G-Protein Coupled Receptor Protein Signaling](#)

Application Details

Application Notes: WB: 0.2-1 µg/mL
Optimal conditions should be determined by the investigator.

Comment: PALM Blocking Peptide, catalog no. 33R-4884, is also available for use as a blocking control in assays to test for specificity of this PALM antibody

Restrictions: For Research Use only

Handling

Format: Lyophilized

Concentration: Lot specific

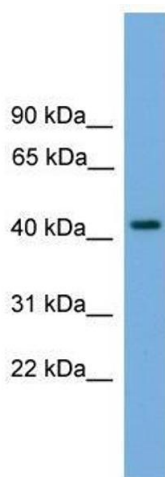
Buffer: Lyophilized powder. Add 50 µL of distilled water. Final antibody concentration is 1 mg/mL in PBS buffer.

Handling Advice: Avoid repeated freeze/thaw cycles.

Storage: 4 °C/-20 °C

Storage Comment: Store at 4 °C, following reconstitution, aliquot and store at -20 °C.

Images



Western Blotting

Image 1. Western Blot showing PALM antibody used at a concentration of 1-2 µg/ml to detect its target protein.