

Datasheet for ABIN928845 **anti-NPTX2 antibody (N-Term)**



[Go to Product page](#)

1 Image

Overview

Quantity:	100 µL
Target:	NPTX2
Binding Specificity:	N-Term
Reactivity:	Human
Host:	Rabbit
Clonality:	Polyclonal
Conjugate:	This NPTX2 antibody is un-conjugated
Application:	Western Blotting (WB)

Product Details

Immunogen:	NPTX2 antibody was raised in rabbit using the N terminal of NPTX2 as the immunogen
Purification:	Purified

Target Details

Target:	NPTX2
Alternative Name:	NPTX2 (NPTX2 Products)
Background:	This gene encodes a member of the family of neuronal petraxins, synaptic proteins that are related to C-reactive protein. This protein is involved in excitatory synapse formation. It also plays a role in clustering of alpha-amino-3-hydroxy-5-methyl-4-isoxazolepropionic acid (AMPA)-type glutamate receptors at established synapses, resulting in non-apoptotic cell death of dopaminergic nerve cells. Up-regulation of this gene in Parkinson disease (PD) tissues suggests

Target Details

that the protein may be involved in the pathology of PD. Synonyms: Polyclonal NPTX2 antibody, Anti-NPTX2 antibody, neuronal pentraxin II antibody, NARP antibody, NP-II antibody, NP2 antibody.

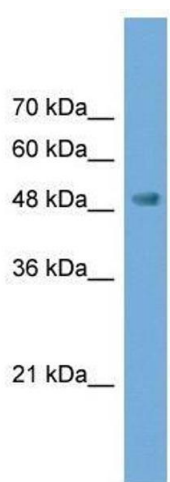
Application Details

Application Notes:	WB: 0.2-1 µg/mL Optimal conditions should be determined by the investigator.
Comment:	NPTX2 Blocking Peptide, catalog no. 33R-9758, is also available for use as a blocking control in assays to test for specificity of this NPTX2 antibody
Restrictions:	For Research Use only

Handling

Format:	Lyophilized
Concentration:	Lot specific
Buffer:	Lyophilized powder. Add 50 µL of distilled water. Final antibody concentration is 1 mg/mL in PBS buffer.
Handling Advice:	Avoid repeated freeze/thaw cycles.
Storage:	4 °C/-20 °C
Storage Comment:	Store at 4 °C, following reconstitution, aliquot and store at -20 °C.

Images



Western Blotting

Image 1. Western Blot showing NPTX2 antibody used at a concentration of 1-2 µg/ml to detect its target protein.