

Datasheet for ABIN928847
anti-PDE2A antibody (N-Term)



[Go to Product page](#)

1 Image

Overview

| | |
|----------------------|--------------------------------------|
| Quantity: | 100 µL |
| Target: | PDE2A |
| Binding Specificity: | N-Term |
| Reactivity: | Human, Rat |
| Host: | Rabbit |
| Clonality: | Polyclonal |
| Conjugate: | This PDE2A antibody is un-conjugated |
| Application: | Western Blotting (WB) |

Product Details

| | |
|-------------------|--|
| Immunogen: | Pde2 a antibody was raised in rabbit using the N terminal of Pde2 as the immunogen |
| Cross-Reactivity: | Rat (Rattus) |
| Purification: | Purified |

Target Details

| | |
|-------------------|--|
| Target: | PDE2A |
| Alternative Name: | Pde2a (PDE2A Products) |
| Background: | The activation of Pde2a induces decreased cAMP accumulation, It is involved in nitric oxide mediated signaling in cardiac fibroblasts. Synonyms: Polyclonal Pde2a antibody, Anti-Pde2a antibody, phosphodiesterase 2A, cGMP-stimulated antibody, Pde2 antibody, Pde2a2 antibody, Pde2a antibody. |

Target Details

Pathways: [cAMP Metabolic Process](#), [Synaptic Membrane](#)

Application Details

Application Notes: Optimal conditions should be determined by the investigator.

Comment: Pde2a Blocking Peptide, catalog no. 33R-1799, is also available for use as a blocking control in assays to test for specificity of this Pde2a antibody

Restrictions: For Research Use only

Handling

Format: Lyophilized

Concentration: Lot specific

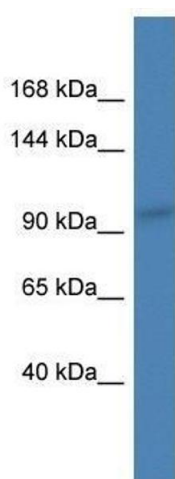
Buffer: Lyophilized powder. Add 50 μ L of distilled water. Final antibody concentration is 1 mg/mL in PBS buffer.

Handling Advice: Avoid repeated freeze/thaw cycles.

Storage: 4 $^{\circ}$ C/-20 $^{\circ}$ C

Storage Comment: Store at 4 $^{\circ}$ C, following reconstitution, aliquot and store at -20 $^{\circ}$ C.

Images



Western Blotting

Image 1. Western Blot showing Pde2a antibody used at a concentration of 1.0 μ g/ml against Rat Brain Lysate