

Datasheet for ABIN928857  
**anti-PSMD10 antibody (N-Term)**



[Go to Product page](#)

1 Image

## Overview

Quantity:	100 µL
Target:	PSMD10
Binding Specificity:	N-Term
Reactivity:	Human, Mouse
Host:	Rabbit
Clonality:	Polyclonal
Conjugate:	This PSMD10 antibody is un-conjugated
Application:	Western Blotting (WB)

## Product Details

Immunogen:	Psmid10 antibody was raised in rabbit using the N terminal of Psmid10 as the immunogen
Cross-Reactivity:	Mouse (Murine)
Purification:	Purified

## Target Details

Target:	PSMD10
Alternative Name:	Psmid10 ( <a href="#">PSMD10 Products</a> )
Background:	Psmid10 acts as a chaperone during the assembly of the 26S proteasome, specifically of the PA700/19S regulatory complex (RC). In the initial step of the base subcomplex assembly, Psmid10 is part of an intermediate PSMD10:PSMC4:PSMC5:PAAF1 module which probably assembles with a PSMD5:PSMC2:PSMC1:PSMD2 module By similarity. Psmid10 acts

## Target Details

---

as an oncoprotein by being involved in negative regulation of tumor suppressors RB1 and p53/TP53. Overexpression of this gene is leading to phosphorylation of RB1 and proteasomal degradation of RB1. Psm10 regulates CDK4-mediated phosphorylation of RB1 by competing with CDKN2A for binding with CDK4. Synonyms: Polyclonal Psm10 antibody, Anti-Psm10 antibody, proteasome, prosome, macropain 26S subunit, non-ATPase, 10 antibody, AW554874 antibody.

Pathways: [Mitotic G1-G1/S Phases](#), [DNA Replication](#), [Maintenance of Protein Location](#), [Synthesis of DNA](#), [Ubiquitin Proteasome Pathway](#)

## Application Details

---

Application Notes: Optimal conditions should be determined by the investigator.

Comment: Psm10 Blocking Peptide, catalog no. 33R-4354, is also available for use as a blocking control in assays to test for specificity of this Psm10 antibody

Restrictions: For Research Use only

## Handling

---

Format: Lyophilized

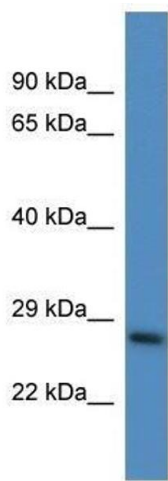
Concentration: Lot specific

Buffer: Lyophilized powder. Add 50  $\mu$ L of distilled water. Final antibody concentration is 1 mg/mL in PBS buffer.

Handling Advice: Avoid repeated freeze/thaw cycles.

Storage: 4  $^{\circ}$ C/-20  $^{\circ}$ C

Storage Comment: Store at 4  $^{\circ}$ C, following reconstitution, aliquot and store at -20  $^{\circ}$ C.



### Western Blotting

**Image 1.** Western Blot showing Psmd10 antibody used at a concentration of 1.0 ug/ml against Mouse Liver Lysate