

Datasheet for ABIN928860
anti-TWF1 antibody (C-Term)



[Go to Product page](#)

1 Image

Overview

Quantity:	100 µL
Target:	TWF1
Binding Specificity:	C-Term
Reactivity:	Human, Rat
Host:	Rabbit
Clonality:	Polyclonal
Conjugate:	This TWF1 antibody is un-conjugated
Application:	Western Blotting (WB)

Product Details

Immunogen:	Twf1 antibody was raised in rabbit using the C terminal of Twf1 as the immunogen
Cross-Reactivity:	Rat (Rattus)
Purification:	Purified

Target Details

Target:	TWF1
Alternative Name:	Twf1 (TWF1 Products)
Background:	Twf1 is an actin-binding protein involved in motile and morphological processes. It inhibits actin polymerization, likely by sequestering G-actin. By capping the barbed ends of filaments, it also regulates motility. It seems to play an important role in clathrin-mediated endocytosis and distribution of endocytic organelles. Synonyms: Polyclonal Twf1 antibody, Anti-Twf1 antibody,

Target Details

	twinfilin, actin-binding protein, homolog 1, Drosophila antibody, MGC105817 antibody, Ptk9 antibody.
Pathways:	Regulation of Actin Filament Polymerization , Maintenance of Protein Location

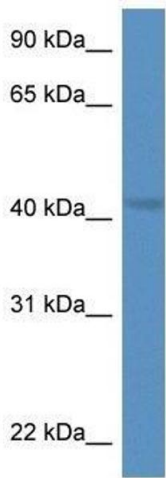
Application Details

Application Notes:	Optimal conditions should be determined by the investigator.
Comment:	Twf1 Blocking Peptide, catalog no. 33R-2514, is also available for use as a blocking control in assays to test for specificity of this Twf1 antibody
Restrictions:	For Research Use only

Handling

Format:	Lyophilized
Concentration:	Lot specific
Buffer:	Lyophilized powder. Add 50 µL of distilled water. Final antibody concentration is 1 mg/mL in PBS buffer.
Handling Advice:	Avoid repeated freeze/thaw cycles.
Storage:	4 °C/-20 °C
Storage Comment:	Store at 4 °C, following reconstitution, aliquot and store at -20 °C.

Images



Western Blotting

Image 1. Western Blot showing Twf1 antibody used at a concentration of 1.0 ug/ml against Rat Brain Lysate