

Datasheet for ABIN928869
anti-SEMA3F antibody (N-Term)



[Go to Product page](#)

1 Image

Overview

Quantity:	100 µL
Target:	SEMA3F
Binding Specificity:	N-Term
Reactivity:	Human, Mouse
Host:	Rabbit
Clonality:	Polyclonal
Conjugate:	This SEMA3F antibody is un-conjugated
Application:	Western Blotting (WB)

Product Details

Immunogen:	Sema3 f antibody was raised in rabbit using the N terminal of Sema3 as the immunogen
Cross-Reactivity:	Mouse (Murine)
Purification:	Purified

Target Details

Target:	SEMA3F
Alternative Name:	Sema3f (SEMA3F Products)
Background:	The function of this protein remains unknown. Synonyms: Polyclonal Sema3f antibody, Anti-Sema3f antibody, sema domain, immunoglobulin domain, Ig, short basic domain, secreted,, semaphorin 3F antibody, Sema4 antibody, Semak antibody.

Target Details

Pathways: [Regulation of Cell Size](#)

Application Details

Application Notes: Optimal conditions should be determined by the investigator.

Comment: Sema3f Blocking Peptide, catalog no. 33R-2925, is also available for use as a blocking control in assays to test for specificity of this Sema3f antibody

Restrictions: For Research Use only

Handling

Format: Lyophilized

Concentration: Lot specific

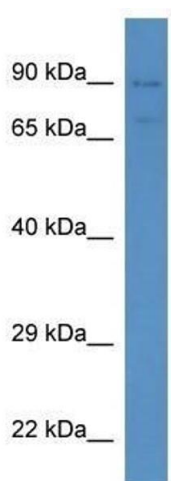
Buffer: Lyophilized powder. Add 50 μ L of distilled water. Final antibody concentration is 1 mg/mL in PBS buffer.

Handling Advice: Avoid repeated freeze/thaw cycles.

Storage: 4 $^{\circ}$ C/-20 $^{\circ}$ C

Storage Comment: Store at 4 $^{\circ}$ C, following reconstitution, aliquot and store at -20 $^{\circ}$ C.

Images



Western Blotting

Image 1. Western Blot showing Sema3f antibody used at a concentration of 1.0 μ g/ml against Mouse Liver Lysate